

APA O

2019

BANGKOK

THE SCIENCES
AND ARTS OF
OPHTHALMOLOGY

**FINAL
PROGRAM**

**SPONSORED
SYMPOSIUM
+
EXHIBITION
DIRECTORY**

6-9.03.2019

**THE 34TH ASIA-PACIFIC ACADEMY
OF OPHTHALMOLOGY CONGRESS**
IN CONJUNCTION WITH
**THE 43RD ANNUAL MEETING
OF THE ROYAL COLLEGE OF
OPHTHALMOLOGISTS OF THAILAND**
CO-SPONSORED BY **EUROPEAN
SOCIETY OF OPHTHALMOLOGY**

Host:



Co-sponsor: Supported by:



<http://2019.apaophth.org/>

DUAL-SEGMENT PUMP TECHNOLOGY

- + Precise fluidics
- + Pulsatile-free
- + Quick vacuum rise
- + Versatile performance

PERFORMANCE IN EVERY DETAIL



Superior chamber stability through superior engineering.^{†,1,2}
That's the Centurion® Effect.

Only the Centurion® Vision System features Active Fluidics™ technology created to:

- Reduce IOP fluctuation throughout the procedure^{1,2}
- Dynamically adjust to maintain chamber stability^{1,2}
- Enhance surgeon control^{1,2}

[†]As compared to the INFINITI® Vision System, bottle gravity system.

1. Lorente R, Fanney D, Injev V, Sharif-Kashani P. Quantification of occlusion break surge in peristaltic-based phacoemulsification systems. ASCRS-ASOA Symposium and Congress; April 25-29, 2014; Boston, USA.

2. Nicoli M, Miller K, Dimalanta R, Loke D; Jules Stein Eye Institute, UCLA. IOP Stability Measurement and Comparison Between Gravity-Fed and Actively Controlled Phacoemulsification Systems. 2014.

THIS IS DIGITAL

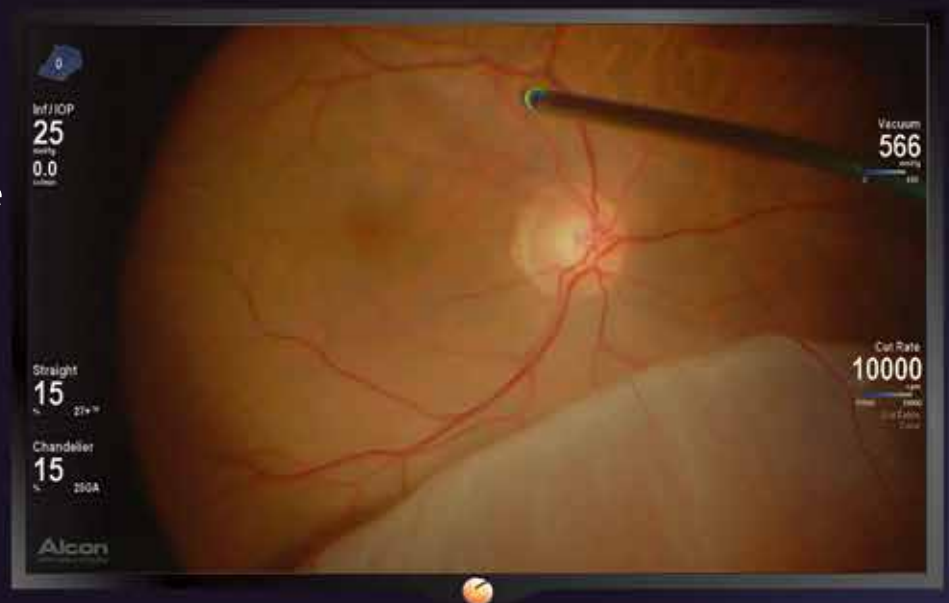
This is

NOENUITY®
DIGITALLY ASSISTED VITREORETINAL SURGERY

High Magnification Performance

Extended Depth of Field

Integration with the
CONSTELLATION Vision System



SEE IT BETTER. DO IT BETTER.

Reference: 1. Alcon Data on File. Yin L, Sarangapani R. Assessment of visual attributes for NOENUITY® 3D Visualization System 1.0 for digitally assisted vitreoretinal surgery. Alcon Modeling and Simulation. January 2016.

NEW! AcrySof® IQ PanOptix® Toric Presbyopia-Correcting IOL



**The lens that's less demanding on patients¹
is now available to more of them.**

The AcrySof® IQ PanOptix® Toric IOL helps you deliver exceptional visual performance at every meaningful distance¹⁻³ for cataract patients who desire both presbyopia and astigmatism correction.

- A more comfortable range of near to intermediate vision^{1,4,5}
 - Delivers on patients' lifestyle needs
- The only trifocal lens with the proven astigmatism correction of AcrySof® IQ Toric IOLs⁶⁻¹¹
 - Outstanding refractive predictability for lasting results^{*6-11}
- Eases postoperative patient management
 - ENLIGHTEN™ Optical Technology promotes more natural patient adaptation³

**Talk to your local Alcon representative to learn more about
the AcrySof® IQ PanOptix® Toric IOL.**

*Studied over a one-year period.

1. Alcon Data on File. TDOC-0018723 (Dec 19, 2014). 2. Alcon Data on File. TDOC-0050480 (June 12, 2015). 3. AcrySof® IQ PanOptix® Toric IOL Directions for Use. 4. Charness N, Dijkstra K, Jastrzebski T, et al. Monitor viewing distance for younger and older workers. Proceedings of the Human Factors and Ergonomics Society 52nd Annual Meeting, 2008. http://www.academia.edu/477435/Monitor_Viewing_Distance_for_Younger_and_Older_Workers. Accessed September 16, 2016. 5. Average of American OSHA, Canadian OSHA and American Optometric Association Recommendations for Computer Monitor Distances. 6. Lane SS, Burgi P, Milios GS, Orchowski MW, Vaughan M, Schwarte E. Comparison of the biomechanical behavior of foldable intraocular lenses. *J Cataract Refract Surg*. 2004;30(23):2397-2402. 7. Lane SS, Ernest P, Miller KM, Hileman KS, Harris B, Waycaster CR. Comparison of clinical and patient reported outcomes with bilateral AcrySof® Toric or spherical control intraocular lenses. *J Refract Surg*. 2009;25(10):899-901. 8. Wirtitsch MG, et al. Effect of haptic design on change in axial lens position after cataract surgery. *J Cataract Refract Surg*. 2004;30(1):45-51. 9. Nejima R, et al. Prospective inpatient comparison of 6.0-millimeter optic single-piece and 3-piece hydrophobic acrylic foldable intraocular lenses. *Ophthalmology*. 2006;113(4):585-590. 10. Koshy JJ, Nishi Y, Hirschmann N, et al. Rotational stability of a single-piece toric acrylic intraocular lens. *J Cataract Refract Surg*. 2010;36(10):1665-1670. 11. Alcon Data on File. TDOC-0016076 (Jul 30, 2013).

You are invited to attend the
Santen Luncheon Symposium

Establishing New Concept for Glaucoma Management

Session 1:

Real-World Clinical Settings in Glaucoma

Chair: PROF. MICHAEL SCOTT KOOK, M.D., Ph.D.
Asan Medical Center, College of Medicine, University of Ulsan, Korea



Real World Experience of PGAs in China

ASSOC. PROF. CHENG GANGWEI, M.D.
Peking Union Medical College Hospital, China



Going Preservative Free: Is It a Must?

ASSOC. PROF. PRIN ROJANAPONGPUN, M.D.
Chulalongkorn University and Hospital, Thailand

Session 2:

IOP Control and Beyond

Chair: ASSOC. PROF. PRIN ROJANAPONGPUN, M.D.
Chulalongkorn University and Hospital, Thailand



Day and Night IOP: Is 24HR Control a Dream?

PROF. ANASTASIOS G.P. KONSTAS, M.D., Ph.D.
Aristotle University of Thessaloniki, Thessaloniki, Greece



Beyond IOP Control: A Closer Look at OBF

PROF. MICHAEL SCOTT KOOK, M.D., Ph.D.
Asan Medical Center, College of Medicine, University of Ulsan, Korea

Thursday, 7th March 2019 | 13.00-14.00

Plenary Hall 2

**Queen Sirikit National Convention Center (QSNCC)
Bangkok, Thailand**



BREAK YOUR ROUTINE

CHECK DIANA
OCTA RESULTS.

TRY DIFFERENT
LETTERS IN YOUR
PRESCRIPTION
FOR DME

Ozurdex®
(dexamethasone intravitreal
implant) 0.7mg

>>> VISIT US AT BOOTH PS02

DME, diabetic macular edema.

Australian HCPS PBS Information: OZURDEX® -
Authority required for the treatment of DMO, RVO
and non-infectious posterior segment uveitis.
Refer to PBS Schedule for full authority information.

BEFORE PRESCRIBING, PLEASE REVIEW APPROVED
PRODUCT INFORMATION AVAILABLE ON REQUEST
FROM ALLERGAN BY PHONING 1800 252 224
OR FROM www.allergan.com.au/products

Australian Minimum Product Information

OZURDEX® 700 µg dexamethasone intravitreal implant is a prescription medicine containing 700 µg of dexamethasone. **Indications:** Treatment of diabetic macular oedema (DME); treatment of macular oedema due to Branch Retinal Vein Occlusion (BRVO) or Central Retinal Vein Occlusion (CRVO); treatment of non-infectious uveitis affecting the posterior segment of the eye. **Contraindications:** Hypersensitivity to ingredients; active/suspected ocular or periocular infection including most viral diseases of the cornea and conjunctiva, including active epithelial herpes simplex keratitis (dendritic keratitis), vaccinia, varicella, mycobacterial infections, and fungal diseases; advanced glaucoma; aphakic eye with rupture of the posterior lens capsule;

eyes with an anterior chamber intraocular lens (ACIOL), iris or transscleral fixated IOLs, and rupture of the posterior lens capsule. **Precautions:** Proper aseptic injection techniques must always be used. Monitor patients for infection or increased IOP. Patients who had a tear in the posterior lens capsule or who had an iris opening to the vitreous cavity are at risk of implant migration, which might lead to corneal oedema. Corticosteroids have been associated with posterior subcapsular cataracts, increased IOP, glaucoma and may enhance the establishment of secondary ocular infections due to bacteria, fungi, or viruses; history of or active herpes simplex; use with caution in patients taking anti-coagulant or anti-platelet medicines; and in patients who are pregnant or breast-feeding; use in children has not been studied; temporary visual blurring may occur after injection of OZURDEX®, therefore, patients should not drive or use machines until this has resolved; administration to both eyes on the same day is not recommended. **Adverse Effects (≥1%):** Cataract, cataract subcapsular, cataract nuclear, lenticular opacities, IOP increased, ocular hypertension, conjunctival haemorrhage*, vitreous haemorrhage*, eye pain*, vitreous detachment*, vitreous floaters*, conjunctival oedema*, vitreous opacities*, anterior chamber inflammation*, visual acuity reduced, endophthalmitis, hypotony of eye, retinal detachment, complication of device insertion, device dislocation, conjunctival hyperaemia*, visual disturbance†, photopsia*, headache†, myodesopsia†, blepharitis†, abnormal sensation in the eye*, eyelid pruritus†,

scleral hyperaemia*, visual impairment†, migraine†. **Dosage:** 700 µg per eye (entire contents of a single-use OZURDEX® device). **Last Amended Date:** 06 June 2017

Note: "*" indicates adverse drug reactions considered to be related to the intravitreal injection procedure.

† Please note change(s) in Product Information

Allergan Australia Pty Ltd. 810 Pacific Highway, Gordon NSW 2072. *Registered trademark(s) of Allergan, Inc. © Allergan, Inc. 2019
Licenses may vary by country, please refer to your local SPC.

Adverse events should be reported to your
Ministry of Health and local Allergan office.

Produced and funded by Allergan.

JOB CODE: INT/0776/2018r
DATE OF PREPARATION: JANUARY 2019

 **Allergan.**

Dry lab available
at booth PS02



EXPERIENCE POWER OVER PRESSURE^{1*}

First line glaucoma surgery (POAG) when drops aren't enough^{2,3}

- Powerful reduction and sustained low-teen IOP^{1*}
- Short duration[†], micro-incisional procedure^{2,4}
- Favourable safety suited to first line glaucoma surgery (POAG)^{3,5*}

The XEN gel implant is intended to reduce intraocular pressure in primary open angle glaucoma patients where previous medical treatments have failed. Always refer to full instructions before use. XEN is not commercially available in all countries. A list of where XEN is available and directions for use are available at the Allergan stand. Please ask an Allergan representative. XEN is a medical device class III CE 0086.

Adverse events should be reported to your local regulatory authorities and your Allergan office.

1. Stalmans I. ICGS, Muscat, Oman, 2016. 2. Allergan XEN directions for use. 2016. 3. Manasses DT and Au L. Ophthalmol Ther 2016; 5(2): 135-46.

4. Dapena CL and Ros RC. Revista Española de Glaucoma e Hipertensión Ocular 2015; 5(3): 350-7. 5. Barton K *et al.* EGS Congress, Prague, Czech Republic, 2016.

* Interim data collated at 12 months from the 2-year APEX study. The study is now completed and the 2-year results are undergoing peer review prior to publication. While all materials will be updated with the 2-year results, the safety and efficacy profiles are anticipated to be consistent with the 12-month data, with the exception of one case of endophthalmitis, which was reported at 15 months following treatment.

† ~10 minutes when experienced⁴

Date of preparation: January 2019
INT/0776/2018m



Mastering everyone's needs with one LVC portfolio.

ZEISS Laser Vision Correction



// RESPONSIBILITY
MADE BY ZEISS

MEL® 90 is not approved and not available for sale in the US.

A broader portfolio means better choices in Laser Vision Correction for any eligible patient.

ZEISS shares your mission to create a better vision standard for your patients. That is why ZEISS offers one of the most comprehensive portfolios in Laser Vision Correction – tailored to you. Enabling you to provide any eligible patient with a suitable procedure in refractive surgery.



Learn more at APAAO 2019:
<http://www.zeiss.com.sg/apao2019>



Replacing assumptions with measurements.

ZEISS IOLMaster 700 with TK



NEW

With **Total Keratometry (TK®)** the IOLMaster® 700 from ZEISS now allows you to directly measure the posterior corneal surface using SWEPT Source OCT technology.

- **Two exclusive new formulas:** Barrett TK Universal II and Barrett TK Toric
- **Can be used in existing IOL calculation formulas** – no need for a second device, third-party software or an online calculator
- Existing IOLMaster 700 can be **upgraded**



Learn more at APAO 2019:
<http://www.zeiss.com.sg/apao2019>

ZEISS



START STRONG STAY STRONG



 **EYLEA®**
(aflibercept solution for injection)

Abbreviation of Eylea Product Information:

Presentation: 1 mL solution for intravitreal injection contains 40 mg aflibercept **Indication:** for treatment of neovascular (wet) age-related macular degeneration (wet AMD), macular edema secondary to central retinal vein occlusion (CRVO), diabetic macular edema (DME), macular edema secondary to branch retinal vein occlusion (BRVO), myopic choroidal neovascularization (myopic CNV). **Dosage and method of administration:** For Neovascular (wet) age-related macular degeneration (wet AMD), the recommended dose for Eylea is 2 mg (equivalent to 50 microliters) intravitreal injection. EYLEA treatment is initiated with one injection per month for three consecutive doses, followed by one injection every 2 months. For Macular edema secondary to central retinal vein occlusion (CRVO), the recommended dose for EYLEA is 2 mg. After the initial injection, treatment is given monthly until visual and anatomic outcomes are stable for three monthly assessments. For Diabetic macular edema (DME), the recommended dose for EYLEA is 2 mg administered by intravitreal injection monthly for the first 5 consecutive doses, followed by one injection every 2 months. Macular edema secondary to branch retinal vein occlusion (BRVO), the recommended dose for Eylea is 2 mg. After the initial injection, treatment is given monthly. For Myopic choroidal neovascularization (myopic CNV), the recommended dose for EYLEA is a single intravitreal injection of 2 mg. Additional doses should be administered only if visual and anatomic outcomes indicate that the disease persists. **Contraindications:** Ocular or periocular infection, Active severe intraocular inflammation, Known hypersensitivity to aflibercept or to any of the excipients. **Special warnings and precautions for use:** Intravitreal injections including those with EYLEA, have been associated with endophthalmitis, Increase in intraocular pressure have been seen within 60 minutes of an intravitreal injection, Women of childbearing potential should use effective contraception during treatment. **Adverse reactions:** Very common ($\geq 1/10$ patients) Conjunctival hemorrhage, Eye pain Selected adverse reactions: Arterial thromboembolic events (ATEs) are adverse events potentially related to systemic VEGF inhibition. There is a theoretical risk of ATEs following intravitreal use of VEGF inhibitors. Immunogenicity-as with all therapeutic proteins, there is a potential for immunogenicity with EYLEA. **Incompatibilities:** EYLEA must not be mixed with other medicinal products



เป็นยาใหม่ใช้เฉพาะสถานพยาบาล
แพทย์ควรติดตามผลการใช้ยา

โปรดอ่านรายละเอียดเพิ่มเติมในเอกสารกำกับยา
ใบอนุญาตโฆษณาเลขที่ ขส. 68/2560
L.TH.MKT.03.2017.1029

LUNCH SYMPOSIUM

THE QUEST TO OPTIMISING CATARACT SURGERY OUTCOMES

Date: 8 March 2019, Friday

Time: 1:00 pm to 2:00 pm

Venue: Plenary Hall 3

AGENDA

1:00 pm Managing Meibomian Gland Dysfunction to Optimise Visual Outcomes
Dr Rohit Shetty (India)

1:20 pm Clinical and Laboratory Experience of Extended Depth Of Focus IOL
Prof Choi Chul Young (Korea)

1:40 pm Optimising Surgical Outcomes with Femtosecond Laser
Prof Chee Soon Phaik (Singapore)



Chairperson
Dr Fam Han Bor
(Singapore)



Chairperson
Dr Sri Ganesh
(India)



Chairperson
Prof Sabong Srivannaboon
(Thailand)



Co-Chairperson/Speaker
Prof Choi Chul Young
(Korea)



Speaker
Prof Chee Soon Phaik
(Singapore)



Speaker
Dr Rohit Shetty
(India)

Visit our booth at **GS01** (Outside Plenary Hall 2 & 3)



Johnson & Johnson

Donate a Photo

You take a photo, we make it a way to do good.
Every photo shared, Johnson & Johnson
donates \$1 to Operation Smile.
Find out more about the cause at our booth.

Operation  Smile

LIPIFLOW® TREATMENT

Come to our booth to learn more and
participate in LIPIFLOW® Treatment



POWERFUL.²
PRECISE.²
PROVEN.¹

LUCENTIS® Wealth of Data



LUCENTIS® Prescribing information

Indications: Treatment of neovascular (wet) age-related macular degeneration (AMD). Treatment of visual impairment due to choroidal neovascularization (CNV). Treatment of visual impairment due to CRVO secondary to pathologic myopia (PM). Treatment of visual impairment due to diabetic macular edema (DME). Treatment of visual impairment due to macular edema secondary to retinal vein occlusion (branch RVO or central RVO). **Dosage and administration:** The recommended dose is 0.3 mg (0.03 mL) given as a single intravitreal injection. The interval between two doses injected into the same eye should not be shorter than 1 month. Wet AMD, DME, RVO, CNV, and CNV secondary to PM treatment is initiated with one injection per month until maximum visual acuity is achieved and/or there are no signs of disease activity. Thereafter, monitoring and treatment intervals should be determined by the physician and should be based on disease activity as assessed by visual acuity and/or anatomic parameters. Monitoring for disease activity may include clinical examination, functional testing or imaging techniques (e.g., optical coherence tomography or fluorescein angiography). While applying the treat-and-extend regimen, the treatment interval should be extended by two weeks at a time for wet AMD and central RVO, or by one month at a time for DME and branch RVO. Lucentis and laser photocoagulation in DME or in branch RVO. Lucentis has been used concomitantly with laser photocoagulation in clinical studies. When given on the same day, Lucentis should be administered at least 30 minutes after laser photocoagulation. Lucentis can be administered in patients who have received previous laser photocoagulation. Lucentis must be administered by a qualified ophthalmologist using aseptic techniques. Broad-spectrum topical microbiocide and anesthetic should be administered prior to the injection. Not recommended in children and adolescents. **Contraindications:** Hypersensitivity to ranibizumab or to any of the excipients, patients with active or suspected ocular or periorbital infections, patients with active intraocular inflammation. **Warnings and precautions:** Intravitreal injections have been associated with endophthalmitis, intraocular inflammation, rhegmatogenous retinal detachment, retinal tear and uterine traumatic cataract. Therefore proper aseptic injection techniques must be used. Patients should be monitored during the week following the injection to permit early treatment if an infection occurs. Transient increases in intraocular pressure (IOP) have been seen within 60 minutes of injection of Lucentis. Sustained IOP increases have also been reported. Intraocular pressure and the position of the upper limb head must be monitored and managed appropriately. There is a potential risk of arterial thromboembolic events following intravitreal use of VEGF-inhibitors. A numerically higher stroke rate was observed in patients treated with ranibizumab 0.5 mg compared to ranibizumab 0.3 mg or control; however, the differences were not statistically significant. Patients with known risk factors for stroke, including history of prior stroke or transient ischemic attack should be carefully evaluated by their physicians as to whether Lucentis treatment is appropriate and the benefit outweighs the potential risk. Available data do not suggest an increased risk of systemic adverse events with bilateral treatment. As with all therapeutic proteins, there is a potential for immunogenicity with Lucentis. Lucentis has not been studied in patients with active systemic infections or in patients with concurrent eye conditions such as retinal detachment or macular hole. Should not be used during pregnancy unless the expected benefit outweighs the potential risk to the fetus. For women who wish to become pregnant and have been treated with ranibizumab, it is recommended to wait at least 3 months after the last dose of ranibizumab before conceiving a child; use of effective contraception is recommended for women of child-bearing potential. Breast-feeding is not recommended. Following treatment patients may develop transient visual disturbances that may interfere with their ability to drive or use machines. Patients should not drive or use machines as long as these symptoms persist. **Interactions:** No formal interaction studies have been performed. **Adverse drug reactions:** Very common (≥10%): intraocular inflammation, vitritis, vitreous detachment, retinal hemorrhage, visual disturbance, eye pain, vitreous floaters, conjunctival hemorrhage, eye irritation, foreign body sensation in eye, lacrimation increased, blepharitis, dry eye, ocular hyperemia, eye pruritus, intraocular pressure increased, nasopharyngitis, headache, arthralgia. Common (1 to 10%): retinal degeneration, retinal disorder, retinal detachment, retinal tear, detachment of the retinal pigment epithelium, retinal pigment epithelium tear, visual acuity reduced, vitreous hemorrhage, vitreous disorder, uveitis, iritis, iridocyclitis, cataract, cataract subcapsular, posterior capsule opacification, punctate keratitis, corneal abrasion, anterior chamber flare, vision blurred, injection site hemorrhage, eye hemorrhage, conjunctivitis, conjunctivitis allergic, eye discharge, photopsia, photophobia, ocular discomfort, eyelid edema, eyelid pain, conjunctival hyperemia, stroke, influenza, urinary tract infection, anemia, anxiety, cough, nausea, allergic reactions (rash, pruritus, urticaria, erythema). Uncommon (0.1 to 1%): blindness, endophthalmitis, hypopyon, hyphema, keratopathy, adhesions, corneal deposits, corneal edema, corneal striae, injection site pain, injection site anterior, abnormal sensation in eye, eyelid irritation. Serious adverse events related to intravitreal injections include endophthalmitis, rhegmatogenous retinal detachment, retinal tear and uterine traumatic cataract. **Presentation:** Vial: Ranibizumab. Each vial contains 2.3 mg of ranibizumab in 0.21 mL solution. *observed only in the DME population.

References

1. Lucentis National Package Insert 5 Aug 2016.
2. Steinbock B. The price of sight-ranibizumab, ophthalmics, and the treatment of macular degeneration. N Engl J Med. 2006;355(14):1409-1412.

โปรดอ่านรายละเอียดเพิ่มเติมในเอกสารอ้างอิงฉบับสมบูรณ์แล้วของสภากาชาดไทย

โทรศูนย์ช่วยเหลือแพทย์ โทร 908/2580

TRB provides 360° treatment options of MGD, Blepharitis & Dry Eye



TRB CHEMEDICA (THAILAND) LTD.

Integrated Solutions for Ophthalmologists

Leica

MICROSYSTEMS

Microscope

OPTOVUE

Widefield OCTA

BRUMABA
OPERATING TABLE SYSTEMS

Operating Table

Geuder[®]
Precision made in Germany

Ophthalmic Surgery

KONAN
MEDICAL

Specular Microscopy



APAO2019 NIDEK Lunch Symposium

Thursday, 7th March, 2019 | 13:00 - 14:00 | Meeting Room 2

Pushing the boundaries of ophthalmic diagnostics

Moderator / Speaker

Speakers



Srinivas Sadda, MD
Doheny Eye Institute, UCLA
USA



Anton Hommer, MD
Hera Hospital
Austria



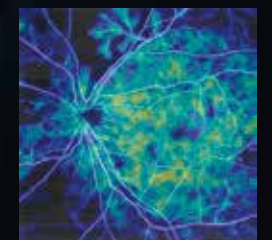
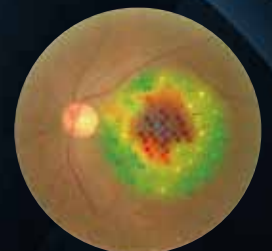
Anna Tan, MD
Singapore National Eye Centre
Singapore

- Gonioscopy still needed?
- Microperimetry : the link between structure and function in AMD
- OCT-A Quantitative Assessments of the Choriocapillaris : New Insights into AMD

Anton Hommer, MD

Anna Tan, MD

Srinivas Sadda, MD



NAVIS-EX Ver. 1.8.0 will soon be available.
CE Marking for this product is pending.

CONTENTS

01

CONGRESS INFORMATION

3

| | | |
|-----|----------------------|----|
| 1.1 | Congress Information | 3 |
| 1.2 | General Information | 5 |
| 1.3 | Social Program | 7 |
| 1.4 | Floor Plan | 8 |
| 1.5 | Package Sponsors | 12 |

02

SPONSORED PROGRAM

15

| | | |
|-------|---------------------------------|----|
| 2.1 | Sponsored Symposium Schedule | 15 |
| 2.1.1 | Day 1 - Mar 6, 2019 (Wednesday) | 15 |
| 2.1.2 | Day 2 - Mar 7, 2019 (Thursday) | 16 |
| 2.1.3 | Day 3 - Mar 8, 2019 (Friday) | 18 |
| 2.2 | Sponsored Wet Lab Schedule | 20 |
| 2.2.1 | Day 2 - Mar 7, 2019 (Thursday) | 20 |

03

EXHIBITOR DIRECTORY

23

| | | |
|-----|-----------------------|----|
| 3.1 | Exhibition Floor Plan | 23 |
| 3.2 | Exhibitor Index | 24 |
| 3.3 | Exhibitor Directory | 28 |

VISIT US AT BOOTH G18-G19
34th APAO CONGRESS,
BANGKOK, MARCH 6-9, 2019

RetCam™ – Pediatric Eye Imaging

RETCAM™ – A PROUD MEMBER OF NATUS MEDICAL FAMILY

A BETTER WAY TO LOOK AT PEDIATRIC OPHTHALMIC DISEASE.

- Objective, high-resolution visualization and documentation
- Much greater field of view than Binocular Indirect Ophthalmoscopy
- Enables image comparison over time
- Facilitates remote consultations, second opinions, and treatment compliance



Neovascular ridge with EFP extends into the vitreous



Retinopathy of Prematurity

BECAUSE EVERY NEWBORN DESERVES CLEAR VISION

NATUS. WHERE BABIES COME FIRST.™



scan to visit our education web site www.vision-care.academy

VISION CARE ACADEMY –
EXCLUSIVE TO RETCAM™ USERS



CONGRESS INFORMATION

The following information is provided to make your attendance at the 34th APAO Congress in Bangkok, Thailand as pleasant as possible. If you have any queries during the Congress or require any assistance, please visit the Registration Desk where our team will be happy to help.

Event Name

The 34th Asia-Pacific Academy of Ophthalmology Congress in conjunction with the 43rd Annual Meeting of the Royal College of Ophthalmologists of Thailand.

Congress Venue

Queen Sirikit National Convention Center (QSNCC)
60 Ratchadaphisek Rd, Khwaeng Khlong Toei
Khet Khlong Toei, Krung Thep Maha Nakhon 10110,
Bangkok, Thailand

Registration and Information Desk

The APAO 2019 Congress Registration and Information Desk is located in Hall A of the QSNCC and will operate during the times listed below:

| | |
|-------------------|---------------|
| Mar 5, 2019 (Tue) | 16:00 - 18:00 |
| Mar 6, 2019 (Wed) | 07:30 - 18:00 |
| Mar 7, 2019 (Thu) | 07:30 - 18:00 |
| Mar 8, 2019 (Fri) | 07:30 - 18:00 |
| Mar 9, 2019 (Sat) | 07:30 - 12:30 |

On-Site Payment

On-site payment with cash and credit card can be made at the Registration Desk during opening hours. Cheques are not accepted.

Name Badges

All delegates registered for the Congress will be issued with a name badge at the Registration Desk.

Satellite Badge Printing Center

Satellite Badge Printing is available at the lobby of the Marriott Marquis Bangkok Queen's Park. Delegate must settle their registration fees beforehand to print the badge at this Center.

Opening Dates & Time

| | |
|-------------------|-------------|
| Mar 5, 2019 (Tue) | 16:00-18:00 |
| Mar 6, 2019 (Wed) | 07:30-12:00 |

A delegate badge entitles you to entry to the following:

- All Scientific Sessions;
- Exhibition Hall; and
- Opening Ceremony of APAO 2019

This badge will be the official pass and must be worn at all times while on-site by the named delegate only.

All badges are nontransferable. Reissuing of name badges for the delegate/accompanying person will be available at the Registration Desk. An administrative fee of USD20 may be incurred for re-issuing a delegate badge.

Accompanying Persons (if any) are entitled to enter only the Exhibition Hall and Opening Ceremony of APAO 2019.

Delegate Bag and Ribbon Collection

Delegate bags and ribbons are available for pickup at the "Delegate Bag Pick Up" counter in C-Second. Delegates can collect their own delegate bag upon presentation of their name badge.

Dress Code

Neat casual attire is acceptable for attendance at Congress sessions and social functions.

APAO Smartphone App

The APAO 2019 mobile app provides easy-to-use interactive capabilities to enhance your Congress experience. The app features all the scientific sessions and instruction courses, posters, e-posters, video abstracts, general information, floor plan, and a city map. With the utilization of the Congress App, you will have access to real-time interaction with the session speakers or panelists by posting questions at the 'Q&A' section in each individual symposium.

The app can be downloaded by scanning the QR code as shown below.



ANDROID APP



IOS APP

Updating the app regularly is recommended. For help on downloading the app and navigating its functions, please ask for assistance at the Registration Desk.

Exhibition Opening Hours

The exhibition will be held at C-Second and Plaza of the QSNCC. Please take the opportunity to visit our exhibitors who have supported the 34th Asia-Pacific Academy of Ophthalmology Congress in showcasing the latest products and services.

| | |
|-------------------|---------------|
| Mar 6, 2019 (Wed) | 09:00 - 18:00 |
| Mar 7, 2019 (Thu) | 09:00 - 18:00 |
| Mar 8, 2019 (Fri) | 09:00 - 18:00 |
| Mar 9, 2019 (Sat) | 09:00 - 12:30 |

Abstract Book

A PDF copy of the abstract book is available online at <http://2019.apaophth.org/publications>. No hard copy will be distributed. Please scan the QR code below to access the abstract book:



Scientific Posters

Paper posters can be found in the Exhibition Hall C-Second. There will be one poster session showcasing over 200 posters.

Session 1: No. 1 - No. 216

Poster sessions will be conducted during the morning and afternoon breaks from March 6 - 9, 2019. Delegates can use the image scanner to scan the poster. They will then be directed to a recording made by the author where applicable.

Additionally, delegates can vote for 5 of their favorite posters using the stickers found inside the delegate bag. Voting begins on March 6 at 09:00 and ends on March 8 at 12:00.

E-Poster & Video Platform

There are over 400 accepted electronic posters and 70 selected videos showcased in APAO 2019. Delegates may visit the E-Poster and Video Platform located in the Exhibition Hall C-Second. They can view e-posters via the smartphone app. They will then be directed to a recording made by the author where applicable.

In addition, delegates can vote for 5 of their favorite e-posters and videos using the platform in the Exhibition Hall and/or the Congress app. The voting period ends on March 8 at 12:00 noon.

VIP Lounge

Delegates with a VIP Pass can use the VIP Lounge located in Hall A.

Morning and Afternoon Tea

Morning and afternoon tea will be served in the Exhibition Hall.

Policies

No Smoking - Smoking is strictly prohibited in all session rooms, meeting and exhibition areas. Your cooperation is appreciated.

Mobile Phones - Please respect the presenter and other delegates by ensuring that your mobile devices are put in silent mode during sessions.

Photography in the Exhibition Hall - Attendees wishing to photograph or videotape an exhibit must obtain permission from the relevant company beforehand.

Photographing or Videotaping Scientific Sessions - Photographing and/or videotaping the scientific sessions are strictly prohibited. (Permission must be obtained in advance by media representatives.)

Certificates of Attendance

Certificates of Attendance can be downloaded through the APAO Congress system (<http://congress.apaophth.org/>) after the Congress. Please log in with the same email address that you used to register for the Congress.

WiFi

Complimentary WiFi is available in the QSNCC.

Congress Photography

Some of the Congress sessions taking place will be filmed and recorded. There will also be a photographer present over the course of the Congress who will be capturing images. Any images will be retained and used by APAO (eg, on the APAO website, in publications, etc). If you have any concern with your photograph being taken or session recorded, please contact the APAO office.

Official Tour Desk

There will be a tour desk next to the Registration Desk to help you with information on Bangkok and booking trips in and around Bangkok while you are here.

Congress Directory

| PLACE | LOCATION |
|-----------------------------|--------------------|
| APAO Office | Executive Center 1 |
| Registration Desk | Hall A |
| Information Desk | Hall A |
| VIP Lounge | Hall A |
| Speaker Ready Room | Plaza |
| Opening Ceremony | Plenary Hall 2 |
| Exhibition Hall | C-Second & Plaza |
| Scientific Posters & Videos | C-Second |
| YO Lounge | C-Ground |
| Wetlab Course | C-Ground |

GENERAL INFORMATION

Venue Information

Queen Sirikit National Convention Center

60 New Rachadapisek Road, Klongtoey, Bangkok 10110, Thailand

General Enquiries: +66 2229 3000

Queen Sirikit National Convention Center (QSNCC) is recognized as Thailand's first world-class convention and exhibition venue. QSNCC offers state-of-the-art equipment and facilities, with services meeting international standards. With a total floor space of 65,000 m², QSNCC facilities include the Exhibition and Function Area, Plenary Hall, Ballroom and Meeting Room. Every room is fully equipped with amenities and technology, as well as the latest event equipment. Other on-site services include the Business Center, restaurants, coffee shops, and food court and beverage corner.

Site Map



Visiting Thailand

APAO 2019 will be held in Bangkok, the capital and most populous city of Thailand. Its friendly, lively atmosphere is a magnet for visitors from around the globe. Bangkok is a regional center for business, finance and communications. It also has plenty of activities for visitors to enjoy: a wide selection of cuisines including the exotic taste of Thai food; an abundance of shops, malls and markets; and the traditional Thai massage or a pampering treatment in an elegant spa.

For more information about Thailand, please visit the following website:

<https://www.tourismthailand.org/home>

Climate

The weather in Bangkok is dominated by a tropical monsoon climate. The temperature varies from 38°C to 19°C with the annual average at about 29°C. The humidity is from 66% to 82.8%. For the latest weather forecast, please visit the Thai Meteorological Department website: https://www.tmd.go.th/en/7-day_forecast.php

Getting to the Congress Venue

Located on New Rachadapisek Road in central Bangkok, QSNCC is conveniently accessible by car or by public transportation. Suvarnabhumi International Airport is a 45-minutes drive from QSNCC, or can be reached via Airport Rail Link through mass transit connections from QSNCC's MRT Subway station.

Taxi

Taxi may drop passengers at the entrance of the QSNCC.

MRT Subway

MRT Queen Sirikit National Convention Center station is right in front of the QSNCC, reached by following Exit No. 3.

BTS Skytrain

Take the BTS Skytrain to Asok interchange station, where visitors catch the subway to MRT QSNCC station. Follow Exit No. 3 to the venue.

Bus

Take bus No. 136 and 185.

Car

QSNCC has its own parking area and an overflow parking lot in the adjacent Thailand Tobacco Monopoly for 1300 vehicles. Alternatively, park-and-ride lots are located at 12 major MRT and BTS stations, while parking buildings are available only on Saturday and Sunday at Chamchuri Square and Jasmine City Building. From these locations, you can catch the MRT Subway or BTS Skytrain (see above).

For more information, please visit the QSNCC website:

<http://www.qsncc.co.th/en/qsncc-venue-information/how-to-get-there.html>

Telecommunications

You may purchase a pre-paid mobile SIM card at the airport or from a telecommunications shop and most convenience stores in Thailand.

Tipping

Tipping is not customary in Thailand. Some restaurants, however, levy a 10% service charge and 7% value-added tax (VAT) on your bill.

Tax Refund

Goods purchased in Thailand are VAT inclusive. However, foreign visitors may receive a 7% VAT refund on luxury goods purchased from shops that participate in the 'VAT Refund for Tourists' scheme. A minimum expenditure of 5,000 baht (including VAT) is required and single purchases must have a value of at least 2,000 baht per day. On the day of purchase, present your passport and request the sales assistant at the store to complete the VAT Refund Application for Tourists form (P.P.10) and attach the original tax invoice to the form. At the airport before you check-in, you need to go to the VAT Refund Office to have your forms stamped. After going through immigration, take your stamped forms to the VAT refund windows to receive the refund.

SOCIAL PROGRAM

Opening Ceremony

Date: March 6, 2019 (Wednesday)
Time: 16:30 - 17:30
Venue: Plenary Hall 2, Queen Sirikit National Convention Center
Open to All Delegates

Welcome Reception

Date: March 6, 2019 (Wednesday)
Time: 17:30 - 18:30
Venue: Exhibition Hall, Coffee Corner at C-Second Level, Queen Sirikit National Convention Center
Open to All Delegates

Women in Ophthalmology Lunch

Date: March 6, 2019 (Wednesday)
Time: 13:00-14:00
Venue: C-Ground (near YO Lounge)
Open to All Delegates

Presidential Dinner

Date: March 6, 2019 (Wednesday)
Time: 19:00 - 21:30
Venue: Nai Lert Heritage Home
By Invitation Only

Cultural Party cum APAO Award Ceremony

Date: March 7, 2019 (Thursday)
Time: 18:30 - 21:30
Venue: Sook Siam
Fee: USD\$75
Open to All Delegates

Charity Run

Date: March 8, 2019 (Friday)
Time: 06:30 - 08:00
Venue: Benchakiti Park (next to Queen Sirikit National Convention Center)
Open to All Delegates

Leadership Development Program Alumni Reception

Date: March 8, 2019 (Friday)
Time: 13:00-14:00
Venue: C-Ground (near YO Lounge)
For APAO LDP Alumni

Young Ophthalmologists' Night

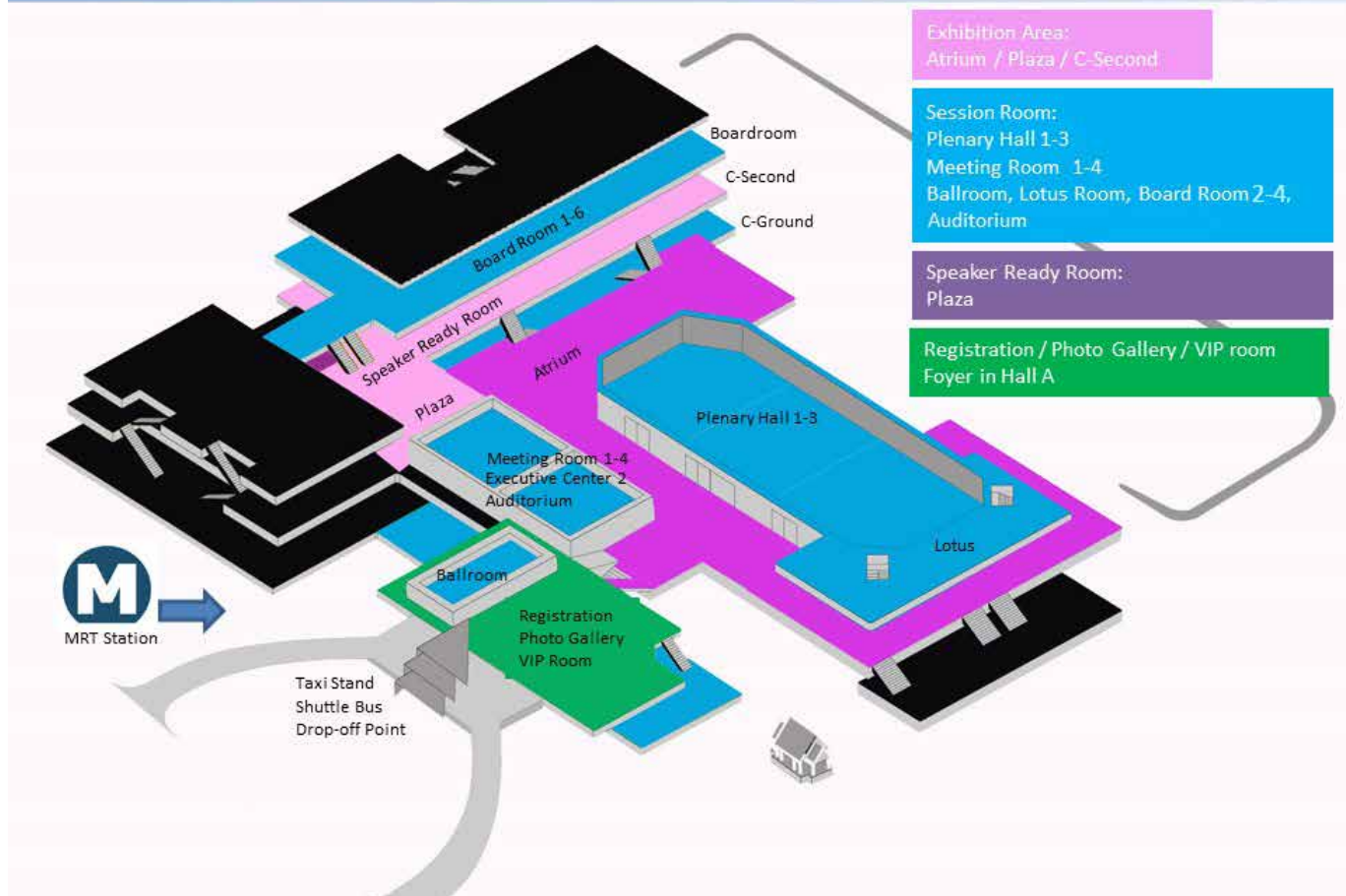
YO Social Muay Thai & Thai Dessert Cooking Class
Date: March 8, 2019 (Friday)
Time: 18:00-19:00
Venue: Young Ophthalmologists' Lounge, Queen Sirikit National Convention Center
For Young Ophthalmologists Only

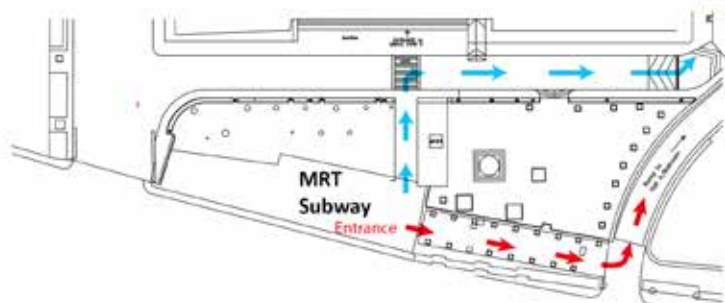
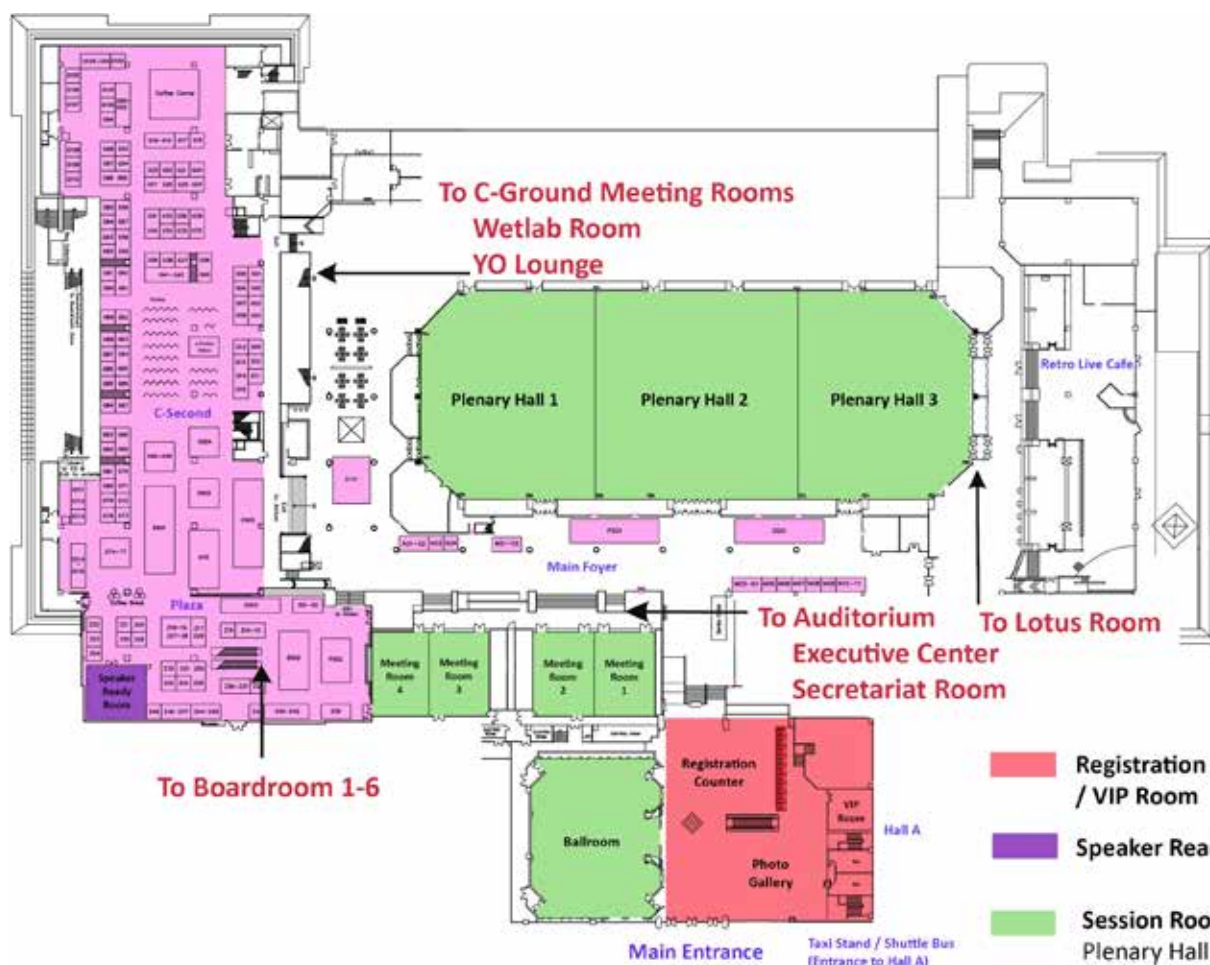
YO Networking

Date: March 8, 2019 (Friday)
Time: 19:00-21:00
Venue: Lake n' Park Restaurant, Queen Sirikit National Convention Center

FLOOR PLAN

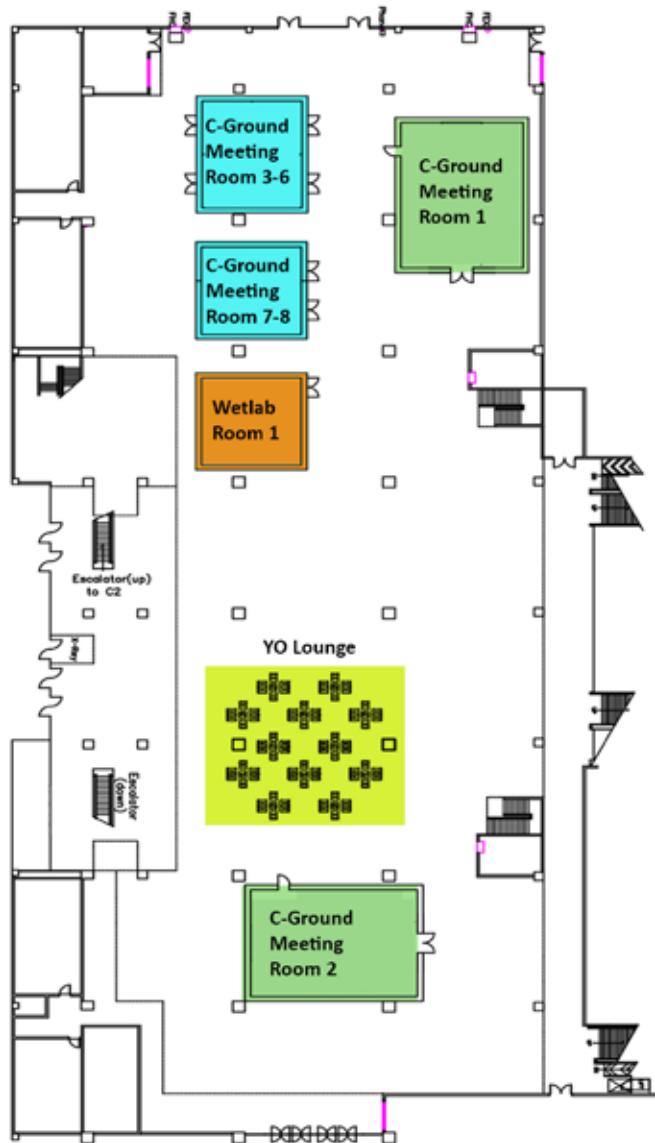
APAO 2019 @ QUEEN SIRIKIT NATIONAL CONVENTION CENTER





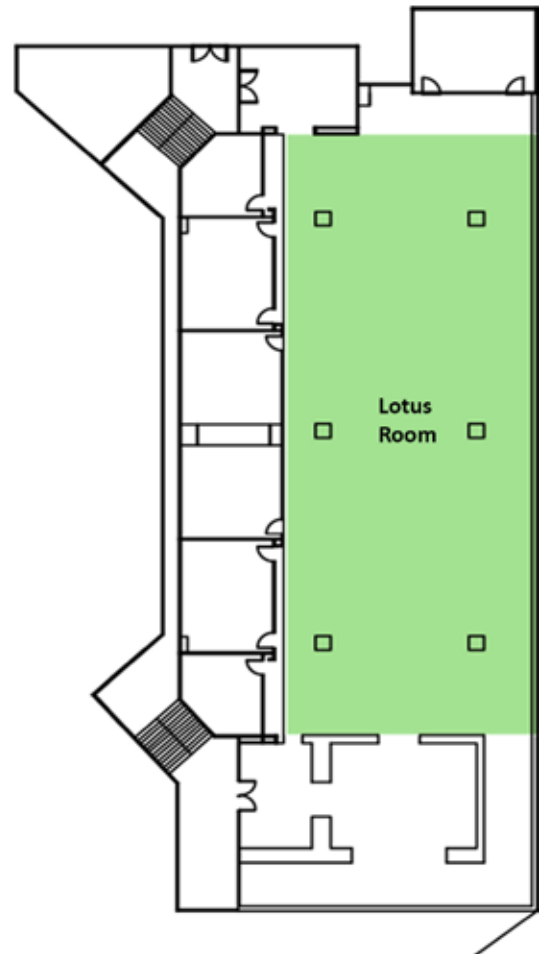
- Registration / Photo Gallery / VIP Room
- Speaker Ready Room
- Session Room
Plenary Hall 1-3
Meeting Room 1-4
Ballroom
- Exhibition Hall / Poster/E-Poster/Video Area
Plaza & C-Second

C-Ground



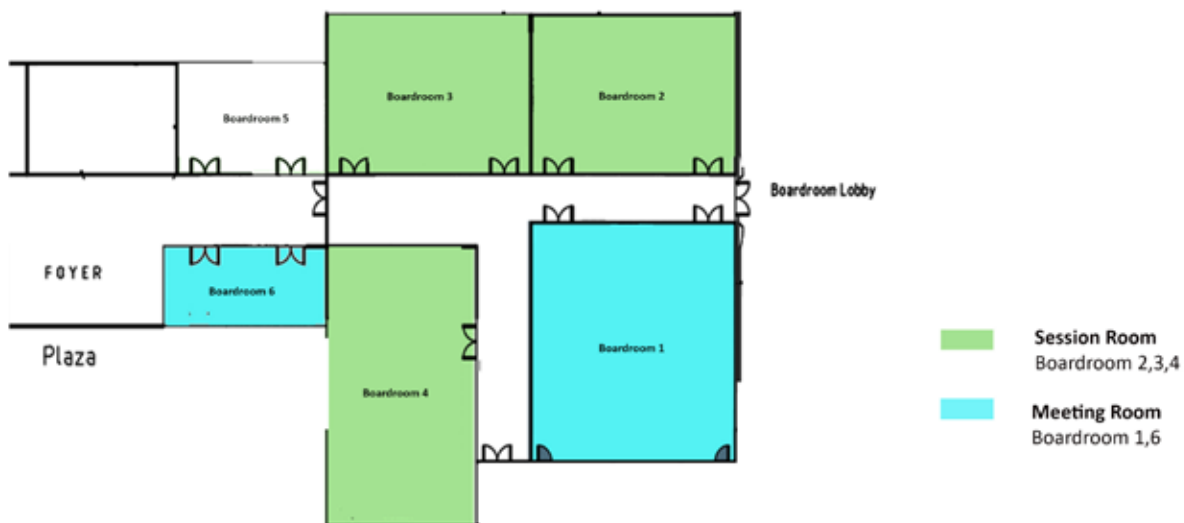
- Session Room**
C-Ground Meeting Room 1-2
- Wetlab Room 1**
- YO Lounge / WIO Luncheon / LDP Alumni Luncheon**
- Meeting Room**
C-Ground Meeting Room 3-8

Lotus Room

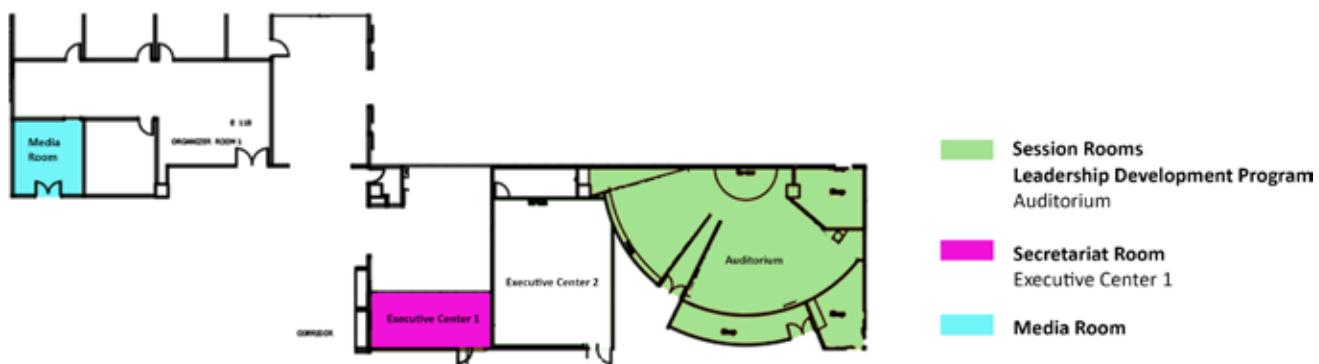


- Session Rooms**
Lotus Room

Boardroom



Auditorium/Executive Centers



PACKAGE SPONSORS

Diamond Sponsors:



Platinum Sponsors:



Gold Sponsors:



Bronze Sponsors:



ABiC #MIGSfacts

**NOTHING
LEFT BEHIND**

Doesn't require
permanent placement
of an implant or stent

100%
COMPREHENSIVE

Targets entire outflow
pathway, including
collector channels

PERFORMED
**WITH OR
WITHOUT**

Cataract Surgery

30%

MEAN
REDUCTION
OF IOP*

50%

REDUCTION
OF MEDICATION
BURDEN*

ABiC

The MIGS that keeps its promise.

ABiC™ is a comprehensive, canal-based MIGS. Not only does ABiC™ deliver on its promise of safety, but it is also effective: on average, ABiC™ achieves a reduction in mean IOP of 30%, combined with a 50% reduction in medication burden*. Restorative and atraumatic, ABiC™ can be performed prior to, or after, other MIGS options – and across the entire disease process. It is also effective as a standalone procedure.

LEARN MORE AT ELLEX EXHIBIT #G111-G112



*E&OE. © 2018. Ellex Medical. * 228-eye ABiC 12-Month Case Series Data, presented at ASCRS 2016. Data on file. Ellex Medical.



BLINK and you won't MISS IT!

THE NEXT STEP IN CANAL-BASED GLAUCOMA SURGERY

Comprising the micron-scale iTrack™ microcatheter, the Viscolnjector™ viscoelastic injector and the iLumin™ illumination source, the iTrack™ surgical system is designed to re-establish the eye's natural outflow system during ABiC™ by accessing, catheterizing and viscodilating the trabecular meshwork, Schlemm's canal and the distal outflow system, including the collector channel ostia. Featuring an illuminated tip, the iTrack™ microcatheter allows you to continually monitor its location during canal circumnavigation.

LEARN MORE AT ELLEX EXHIBIT #G111-G112

E&OE. © 2019. Ellex Medical.



SPONSORED SYMPOSIUM SCHEDULE

MAR
06,
2019
(WED)

Alcon Sponsored Symposium: A New Paradigm of Cataract Refractive Surgery

13:00 - 14:00 **Venue: Plenary Hall 1**
*Chair(s): John So Min **CHANG***

- 13:00 New IOL Platform on Automated Delivery System: Clareon AutonoMe
*Gerd **AUFFARTH***
- 13:15 Delivering Tri-Focal IOL Promises and More: PanOptix and PanOptix Toric
*John So Min **CHANG***
- 13:30 Digital Imaging and Planning in Cataract Refractive Surgery with Verion
*Ramamurthy **DANDAPANI***
- 13:45 Intraoperative Aberrometry — Tips, Tricks, and Interesting Cases
*David **LUBECK***

Medicontur Sponsored Symposium: Multifocality in Comparison — Multicentric Clinical Evidence

13:00 - 14:00 **Venue: Meeting Room 3**
*Chair(s): Sathish **SRINIVASAN***

- 13:00 Management of Astigmatism. Toric IOLs
*Sathish **SRINIVASAN***
- 13:12 Clinical Application of 3D Mapping for Long Term Comparative Outcome of 5 Multifocal IOLs
*Michael **ASSOULINE***
- 13:24 Liberty — Clinical Evidence. Long Term Follow Up
*Carlos **NAVAL***
- 13:36 Clinical Outcome and Patients' Satisfaction After Implantation with Liberty Trifocal
*Im **CHAN YOUNG***

- 13:48 AddOn Trifocal — An Unique Choice for Pseudophakic Patients
*Sathish **SRINIVASAN***

Novartis Sponsored Symposium: Updating Current Trends in Macular Edema Management

13:00 - 14:00 **Venue: Ballroom**
*Chair(s): Wichai **PRASARTRITHA***

- 13:00 Opening and Introductions
*Wichai **PRASARTRITHA***
- 13:05 Optimizing DME Management
*Adrian **KOH***
- 13:20 Current Treatment Trends in RVO
*Somanus **THOONGSUWAN***
- 13:35 Interesting Case Sharing
*Somsiri **SUKAVATCHARIN***
- 13:50 Questions and Answers
*Wichai **PRASARTRITHA***

Quantel Medical Sponsored Symposium: SubLiminal Laser Therapy, from Glaucoma to Retina Treatment

13:00 - 14:00 **Venue: Meeting Room 4**
*Chair(s): Kenneth **FONG***

- 13:00 Introduction to SubLiminal Laser Therapy: SubLiminal Laser Concept
*Kenneth **FONG***
- 13:05 SubCyclo: A New Treatment Alternative for Glaucoma
*Nassima **BENHACHI***
- 13:20 SubLiminal Laser for Retinal Disorders: Diabetic Macular Edema
*Kenneth **FONG***
- 13:35 SubLiminal Laser for Retinal Disorders: Central Serous Chorioretinopathy
*Xiaoling **LIU***
- 13:50 Questions and Answers

Santen Sponsored Symposium: Holistic Approach to Dry Eye Disease

13:00 - 14:00 **Venue: Plenary Hall 2**

Chair(s): Vilavun **PUANGSRICHARERN**

13:00 Dry Eye Patient Journey and Clinical Best Practice
Douglas **LAM**

13:15 The Right Tools for the Right Treatment
Vilavun **PUANGSRICHARERN**

13:30 Holistic Treatment for Dry Eye Disease
Kyung Chul **YOON**

13:50 Questions and Answers

TRB Chemedica Sponsored Symposium: Ocular Surface and the Surgical Outcome: Evidence, Experience and the Expected Action

13:00 - 14:00 **Venue: Meeting Room 2**

Chair(s): Pinnita **PRABHASAWAT**

13:00 Evidence and Experience
Ngamjit **KASETSUWAN**

13:30 Expected Action and How to
Friedrich **KRUSE**



Bayer Sponsored Symposium: Advances in DME Treatment

08:00 - 08:45 **Venue: Meeting Room 3**

Chair(s): Paisan **RUAMVIBOONSUK**

08:00 Welcome and Introduction: The Importance of Vision Gains: A Patient's Perspective
Paisan **RUAMVIBOONSUK**

08:10 Clinical Updates in the Management of DME
Voraporn **CHAIKITMONGKOL**

08:20 Choice of Anti-VEGF and Treatment Regimen for DME: Clinically Relevant Insights from the DRCR Network
Neil **BRESSLER**

08:40 Summary
Paisan **RUAMVIBOONSUK**

Novartis Sponsored Symposium: BBFC, Unlock to a Wide Range of Possibilities

08:00 - 08:45 **Venue: Meeting Room 2**

Chair(s): Manchima **MAKORNWATTANA**

08:00 BBFC, Unlock to a Wide Range of Possibilities
Damrong **WIWATWONGWANA**

Roche Sponsored Symposium: Illuminating the Future of DME Management

08:00 - 08:45 **Venue: Meeting Room 4**

Chair(s): Paul **MITCHELL**

08:00 Opening Remarks
Paul **MITCHELL**

08:05 Managing the Unmet Needs in DME
Gemmy Chui-Ming **CHEUNG**

08:20 Broadening the DME Treatment Landscape
Timothy **LAI**

08:35 Panel Discussion

Welch Allyn Sponsored Symposium: Welch Allyn Spot Vision Screener & Its Usage in Ophthalmology, Pediatric Clinics and Public Health Screening

08:00 - 08:45 **Venue: Meeting Room 1**

Chair(s): Miho **SATO**

08:00 Welch Allyn Spot Vision Screener & Its Usage in Ophthalmology, Pediatric Clinics and Public Health Screening
Shion **HAYASHI**

Alcon Sponsored Symposium: See More, Do More — A 3D Experience

13:00 - 14:00 **Venue: Plenary Hall 3**

Chair(s): Andrew **CHANG**

13:00 Approaching Advanced Surgical Techniques with Confidence
Pear **PONGSACHAREONNONT**

13:15 My Experience with Advanced Beveled Cutter Technology
Srinivas **JOSHI**

13:30 Achieving High Precision in Complex Cases
Chun **ZHANG**

13:45 Latest Development of 3D Visualization
Kazuaki **KADONOSONO**

Allergan Sponsored Symposium: Challenging the Paradigm in Glaucoma Management

13:00 - 14:00 **Venue: Ballroom**

Chair(s): Tin **AUNG**, Clement **THAM**

- 13:00 Introduction
- 13:05 Individualised Glaucoma Management: Why Should We Challenge the Paradigm?
Jonathan CROWSTON
- 13:15 Evolving the Therapeutic Paradigm
Anthony KHAWAJA
- 13:25 Evolving the Surgical Paradigm
Michael COOTE
- 13:40 The XEN Learning Experience
Chelvin SNG
- 13:55 Summary

Bayer Sponsored Symposium: Extending Horizons in the Management of nAMD and PCV

13:00 - 14:00 **Venue: Meeting Room 1**
Chair(s): Wichai PRASARTRITHA

- 13:00 Welcome and Introduction
Wichai PRASARTRITHA
- 13:05 The Importance of a Proactive Treatment Approach
Paul MITCHELL
- 13:20 An Individualized Approach in nAMD: Recent Evidence from a Treat and Extend Study
Gemmy Chui-Ming CHEUNG
- 13:35 Management of PCV: Clinical Insights from the PLANET Study
Tien-Yin WONG
- 13:55 Summary
Wichai PRASARTRITHA

Carl Zeiss Sponsored Symposium: More Options for Enhancing Cataract Refractive Outcomes

13:00 - 14:00 **Venue: Plenary Hall 1**
Chair(s): Ronald YEOH

- 13:00 How the Combination of Anterior and Posterior Keratometry Leads to Better Refractive Outcomes
Sabong SRIVANNABOON
- 13:20 Expectations and Outcomes with State of the Art Premium IOLs
Nawat WATANACHAI
- 13:40 Seamless Workflow; Enhancing Patients' Experience
Ronald YEOH

Nidek Sponsored Symposium: Pushing the Boundaries of Ophthalmic Diagnostics

13:00 - 14:00 **Venue: Meeting Room 2**
Chair(s): Srinivas SADDA

- 13:00 Gonioscopy Still Needed?
Anton HOMMER
- 13:20 Microperimetry: The Link Between Structure and Function in AMD
Anna TAN
- 13:40 OCT-A Quantitative Assessments of the Choriocapillaris: New Insights into AMD
Srinivas SADDA

OCULUS Sponsored Symposium: Advancements in Corneal Tomography: Clinical Applications of Pentacam & Corvis ST in Cataract and Refractive Surgery

13:00 - 14:00 **Venue: Meeting Room 3**
Chair(s): Michael BELIN

- 13:00 Biometry and IOL-Power Calculations: Comparison of IOLMaster 700 vs. Pentacam AXL
Gerd AUFFARTH
- 13:12 Clinical Applications of the Pentacam ABCD Keratoconus Progression Display
Michael BELIN
- 13:24 Advancements in Corneal Tomography and Biomechanical Assessment
Vishal JHANJI
- 13:36 Detection of Subclinical Ectasia Using Corneal Tomographic and Biomechanical Assessment
Shizuka KOH
- 13:48 Use of Combined Tomographic and Biomechanical Evaluation in Pre-Refractive Surgery Screening
Tommy CHAN

Santen Sponsored Symposium: Establishing New Concept for Glaucoma Management

13:00 - 14:00 **Venue: Plenary Hall 2**
Chair(s): Michael KOOK, Prin ROJANAPONGPUN

- 13:00 Section 1: Real-World Clinical Settings in Glaucoma
Michael KOOK
- 13:05 Real World Experience of PGAs in China
Gangwei CHENG
- 13:15 Going Preservative Free: Is It a Must?
Prin ROJANAPONGPUN

- 13:25 Section 2: IOP Control and Beyond
Prin ROJANAPONGPUN
- 13:27 Day and Night IOP: Is 24 Hour Control a Dream?
Anastasios KONSTAS
- 13:47 Beyond IOP Control: A Closer Look at OBF
Michael KOOK
- 13:57 Conclusion
Prin ROJANAPONGPUN



OSD Medical Sponsored Symposium: The Oculentis Toolbox for Lens Surgery — FEMTIS, LENTIS Comfort & Mplus

08:00 - 08:45 **Venue: Meeting Room 3**

- 08:00 My Personalize Approach with LENTIS MF20 & MF30 for Happy Patients
Yean Yaw CHOONG
- 08:10 FEMTIS Comfort: The Capsule Fixated EDOF IOL Giving Precise Centration and Lens Position
Patrick VERSACE
- 08:20 Customized and Mixed MPlus Family to Suit Patients' Needs
Prin ROJANAPONGPUN
- 08:30 Clinical Experience on a Rotationally Asymmetric IOL – Comfort
John So Min CHANG

Alcon Sponsored Surgical Video Symposium: Optimizing Outcomes with Innovative Cataract Refractive Suite Technologies

09:30 – 10:30 **Venue: Plenary Hall 2**
Chair(s): Ronald YEOH

- 09:30 Challenging Cases Management with Advanced Phacoemulsification Technology
Haripriya ARAVIND
- 09:45 FLACS – Benefits of Precision and Pre-Treatment
Tim ROBERTS
- 10:00 Optimizing and Verifying Cataract Refractive Outcomes
Prin ROJANAPONGPUN

10:15 Questions and Answers

Allergan Sponsored Symposium: Recent Advances in the Management of DME

13:00 - 14:00 **Venue: Ballroom**
Chair(s): Kenneth FONG, Adrian KOH

- 13:00 Welcome and Introduction
Kenneth FONG, Adrian KOH
- 13:02 Predicting Response in Retinal Disease
Marc DE SMET
- 13:14 Latest Findings from the International Retina Group
Jay CHHABLANI
- 13:25 DME Guidelines: What Matters in My Practice?
Samantha FRASER-BELL
- 13:36 Managing DME in Clinic: Reality vs Trials
Adrian KOH
- 13:50 Discussion and Q&A
Kenneth FONG, Adrian KOH

Carl Zeiss Sponsored Symposium: Laser Vision Correction: A Complete Spectrum

13:00 - 14:00 **Venue: Meeting Room 1**
Chair(s): Khairidzan MOHD KAMAL

- 13:00 SMILE Evidence Based Practice
Ramamurthy DANDAPANI
- 13:20 PRESBYOND LBV — Beyond Conventional Monovision
Mahipal SACHDEV
- 13:40 SMILE Practice Development
Detlev BREYER

Johnson & Johnson Vision Sponsored Symposium: The Quest to Optimizing Cataract Surgery Outcomes

13:00 - 14:00 **Venue: Plenary Hall 3**
Chair(s): Han Bor FAM, Sri GANESH, Sabong SRIVANNABOON

- 13:00 Managing Meibomian Gland Dysfunction to Optimize Visual Outcomes
Rohit SHETTY
- 13:20 Clinical and Laboratory Experience of Extended Depth of Focus IOL
Chul Young CHOI
- 13:40 Optimizing Surgical Outcomes with Femtosecond Laser
Soon-Phaik CHEE

02

SPONSORED PROGRAM

Santen Sponsored Symposium: The Art of Infection Control — Maximizing Microbial Knowledge

13:00 - 14:00 **Venue: Plenary Hall 1**

*Chair(s): Shigeru **KINOSHITA***

- 13:00 Let's Talk About Infection: World Leader In Academic and Clinical Ophthalmology
*Donald **TAN***
- 13:20 Panel Forum: Optimizing Clinical Decision — Corneal Infection at an Unusual Location
*Lingyi **LIANG***
- 13:30 Panel Forum: Optimizing Clinical Decision — Rare Diagnosis of Endophthalmitis: A Case Worth Sharing
*Ruben Lim Bon **SIONG***
- 13:40 Panel Forum: Optimizing Clinical Decision — Surgical Outcome Surprise with Mycobacterial Infection
*Pinnita **PRABHASAWAT***
- 13:50 Questions and Answers

SPONSORED WET LAB SCHEDULE

MAR
07,
2019
(THU)

Ellex Sponsored Wetlab Course

Join Ellex for an instructional Wet Lab on ABiC, a restorative canal-based minimally invasive glaucoma surgery (MIGS). Hosted as part of the official program of the APAO 2019, the 30-minute Wet Lab will address best treatment practices for ABiC, featuring world-renowned MIGS practitioner Dr. David Lubeck (USA). The Wet Lab will address the following topics: Identification of anatomical cues that can help guide and orient the ABiC procedure i.e. Schlemm's canal, choroid, scleral spur and Schwalbe's line; clinical pearls for the successful pre-operative, intra-operative and post-operative management of patients undergoing ABiC; patient selection criteria for ABiC; the role of ABiC in the glaucoma treatment algorithm, relative to MIGS procedures, medications and other surgical approaches.

09:00 - 11:15 **Venue: Wetlab Room 1**

| | | | |
|-------|--|-------|---|
| 09:00 | Identification of Anatomical Cues That can Help Guide and Orient the ABiC Procedure & Hands-On Training <i>Andrzej DMITRIEW, David LUBECK</i> | 10:10 | Patient Selection Criteria for ABiC & Hands-On Training <i>Andrzej DMITRIEW, David LUBECK</i> |
| 09:30 | Break | 10:40 | Break |
| 09:35 | Clinical Pearls for the Successful Pre-Operative, Intra-Operative and Post-Operative Management of Patients Undergoing ABiC & Hands-On Training <i>Andrzej DMITRIEW, David LUBECK</i> | 10:45 | The Role of ABiC in the Glaucoma Treatment Algorithm, Relative to MIGS Procedures, Medications and Other Surgical Approaches & Hands-On Training <i>Andrzej DMITRIEW, David LUBECK</i> |
| 10:05 | Break | | |



BIOMETRY
OCT



OCT CORNEAL
TOPOGRAPHY



ANTERIOR
WIDE



ANGIO OCT



GLAUCOMA
ANALYSIS
GCL & RNFL



FULL AUTO

THE ONLY COMPLETE OCT SYSTEM IN THE WORLD



The World's first OCT Biometry | The World's fastest OCT | The World's first OCT Topography



OPTOPOL
technology

manufacturer of the first in the world Spectral Domain OCT

optopol.com

Breakfast satellite symposium:

Illuminating the future of DME management

08:00–08:45

Thursday 07 March 2019

Meeting Room 4, Queen Sirikit National Convention Center

08:00 Opening remarks

Prof. Paul Mitchell, Australia

08:05 Managing the unmet needs in DME

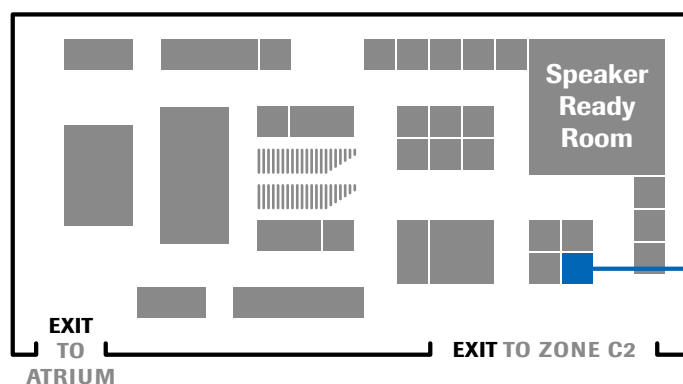
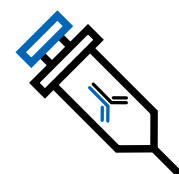
Prof. Gemmy Cheung, Singapore

08:20 Broadening the DME treatment landscape

Prof. Timothy Lai, Hong Kong

08:35 Panel discussion

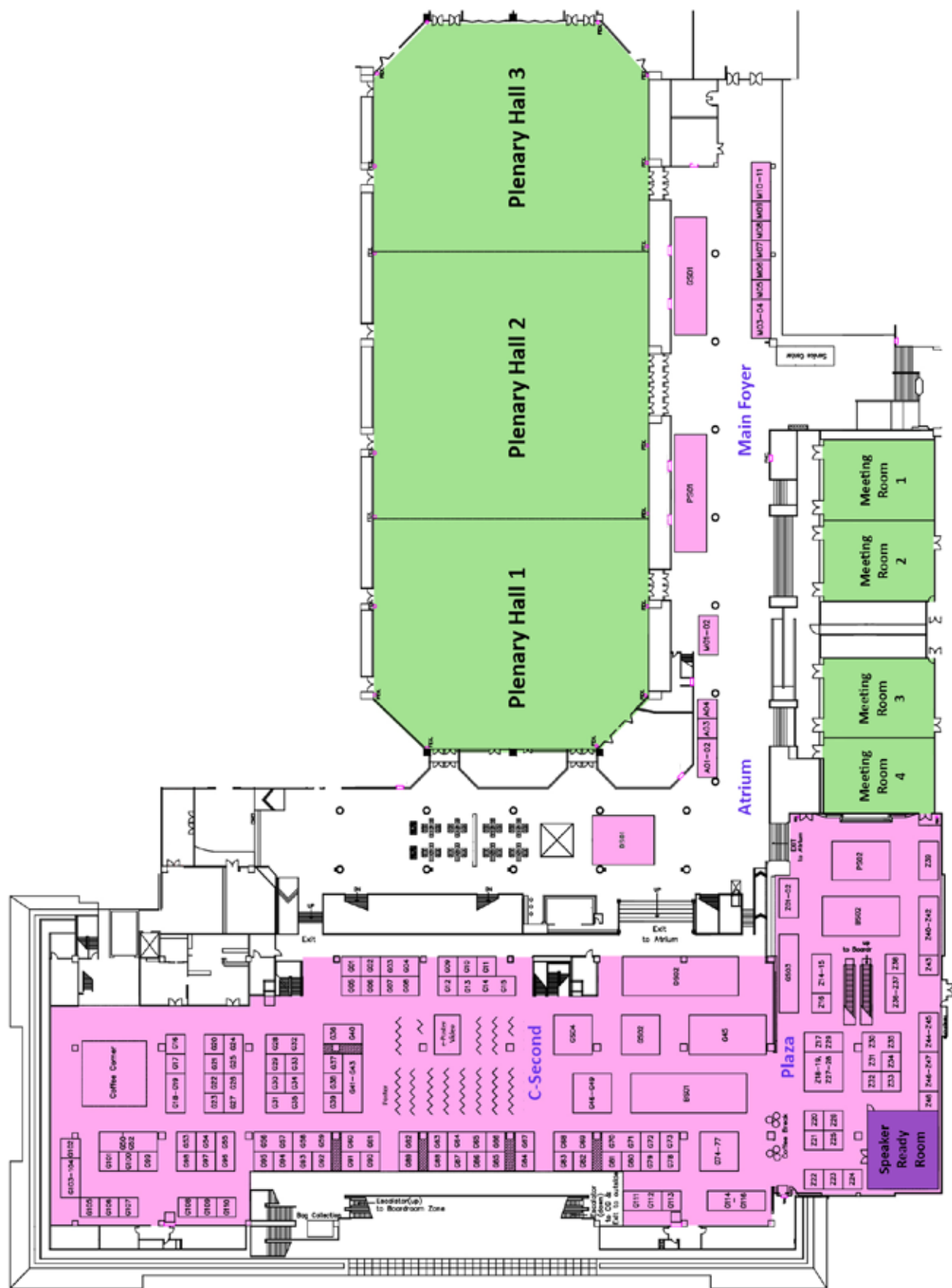
All



**Visit us at
Booth Z21
Plaza Zone**

RHINE AND YOSEMITE PHASE III TRIALS: NOW ENROLLING

EXHIBITION FLOOR PLAN



EXHIBITOR INDEX

| | Booth No. |
|---|---------------|
| DIAMOND SPONSORS | |
| ALCON PTE LTD | DS02 |
| SANTEN PHARMACEUTICAL CO, LTD | DS01 |
| PLATINUM SPONSORS | |
| ALLERGAN PHARMACEUTICAL INTERNATIONAL LIMITED | PS02 |
| CARL ZEISS PTE LTD | PS01 |
| GOLD SPONSORS | |
| BAYER THAI CO, LTD | GS03 |
| JOHNSON & JOHNSON VISION | GS01, M03-M04 |
| NOVARTIS (THAILAND) LTD | GS04 |
| TRB CHEMEDICA (THAILAND) LTD | GS02 |
| BRONZE SPONORS | |
| BJH MEDICAL CO LTD | BS01 |
| NIDEK CO LTD | BS02 |
| EXHIBITORS | |
| A.R.C. LASER GMBH | Z22 |
| ACMED CO, LTD | G21 |
| ADAPTICA SRL | G54 |
| AFTA SERVICE AND SUPPLY CO LTD | G74-G77 |
| ALFA INTES INDUSTRIA TERAPEUTICA SPLENDORE S.R.L. | G55 & G96 |
| AMERICAN ACADEMY OF OPHTHALMOLOGY | G103-G104 |
| APPASAMY ASSOCIATES | G50-G51 |
| ASIA CORNEA SOCIETY | M07 |
| ASIA-PACIFIC ACADEMY OF OPHTHALMOLOGY | M08 |
| ASIA-PACIFIC VITREO-RETINA SOCIETY | M09 |
| BAISHUN MEDICAL INSTRUMENT FACTORY | G107 |
| BAUSCH & LOMB (THAILAND) LTD | G114-G116 |
| BEAVER-VISITEC INTERNATIONAL | G07-G08 |
| BELLE IN FOCUS SURGICAL CORPORATION | G72 |
| CENTERVUE, SPA | G58-G59 |
| CHENGDU KANGHONG BIOTECHNOLOGY CO, LTD | G92 |
| CHONGQING KANGHUA RUIMING S&T CO, LTD | G29 |
| CILITA LTD | G79 |
| CRISTALENS INDUSTRIE | G84 |
| CRYSTALVUE MEDICAL CORPORATION | G66 |
| DIOPSYS, INC | Z20 |

EXHIBITORS

| | |
|--|-------------------|
| ELLEX | G111-G112 |
| ENTOD PHARMACEUTICALS LTD | G34 |
| EPSILON USA | G89 |
| ESW-VISION | Z30, Z31, Z35 |
| EUROPEAN SOCIETY OF OPHTHALMOLOGY | G105 |
| EXCEL OPTICS SHAH EYE CARE | G108 |
| EXCELLENT HI - CARE PVT LTD | G73 |
| EYE TECH CARE | G113 |
| EYEBRIGHT MEDICAL TECHNOLOGY (BEIJING) CO, LTD | G33 |
| EYEWORLD | M10-M11 |
| F.HOFFMANN - LA ROCHE LTD | Z21 |
| FCI S.A.S | M01-M02 |
| FIBERTECH CO, LTD | G102 |
| FILTECH ENTERPRISE 1994 PUBLIC COMPANY LIMITED | Z44-Z45 |
| FREY SJ | Z16 |
| G. SURGIWEAR LIMITED | Z26 |
| GLAUKOS CORPORATION | G20 |
| GRANDEE INTERNATIONAL CO, LTD | G52 |
| HAAG-STREIT AG | G13-G15 |
| HANITA LENSES | G85-G86 |
| HEIDELBERG ENGINEERING GMBH | G41-G43 |
| HENAN UNIVERSE IOL R&M CO, LTD | G82 |
| HUAIAN FRIMEN CO, LTD | A04 |
| IKEGAMI ELECTRONICS ASIA PACIFIC PTE LTD | G11 |
| INAMI & CO, LTD | Z39 |
| INTERNATIONAL COUNCIL OF OPHTHALMOLOGY | G106 |
| JM SURGICALS | Z32 |
| K&K MEDICAL EQUIPMENT (HK) LIMITED | G70-G71 |
| KAI INDUSTRIES CO, LTD | G23 |
| KHOSLA SURGICAL INDUSTRIES | G09 |
| KOWA COMPANY LTD | G78 |
| LABORATORIES THEA | G31 & G35 |
| LIGHTMED CORPORATION | G56-G57 |
| LUCID KOREA CO | G03-G04 |
| LUMENIS (HK) LTD | A01-A02 |
| MEDA CO, LTD | G90 |
| MEDI-SUN PTE LTD | G80 |
| MEDIA MICE | Z48 |
| MEDICONTUR KFT | Z18-Z19 & Z27-Z28 |
| MEDIMAGING INTEGRATED SOLUTION INC | G95 |

EXHIBITORS

| | |
|--|-----------|
| MEDIWORKS | G81 |
| MORIA SA | G22 |
| MULTIBIZ (S) PTE LTD | G37 |
| NATUS MEDICAL INCORPORATED | G18-G19 |
| NEITZ INSTRUMENTS CO, LTD | G62 |
| NEW VISION MEDITEC CO, LTD | G91 |
| NEXT SIGHT SRL | Z25 |
| OASIS MEDICAL | G63 |
| OCULUS OPTIKGERÄTE GMBH | G46-G49 |
| OERTLI INSTRUMENTE AG | Z01-Z02 |
| OPTOMED OY | G67 |
| OPTOPOL TECHNOLOGY SP.ZO.O. | G60-G61 |
| OPTOS | Z46-Z47 |
| OSD MEDICAL GMBH | G26-G27 |
| PESCHKE TRADE | G93 |
| PHOENIX TECHNOLOGY GROUP | Z34 |
| PHYSIOL S.A. | G28 & G32 |
| PRESCOTT'S INC | G100 |
| PT. ROHTO LABORATORIES INDONESIA | G16 |
| PUBLIC HEALTH FOUNDATION OF INDIA (PHFI) | M05 |
| QUANTEL MEDICAL | G68-G69 |
| RET, INC | G99 |
| REXXAM CO, LTD | Z17 & Z29 |
| RIGHT MFG CO, LTD | G01 |
| RIFARTEK TECHNOLOGIES CO. LTD | G87 |
| RUMEX INTERNATIONAL CO | G39 |
| SAV-IOL SA | G02 |
| SCHWIND EYE-TECH-SOLUTIONS GMBH | Z40-Z42 |
| SHANGHAI EXCELLENT VISION MEDICAL EQUIPMENT CO LTD | G53 |
| SHANGHAI NEW EYES MEDICAL INC | G83 |
| SHANGHAI VISUSCIENCE MEDITECH CO, LTD | Z43 |
| SHENYANG XINGQI PHARMACEUTICAL CO, LTD | G06 |
| SHENZHEN MOPTIM IMAGING TECHNIQUE CO, LTD | G36 & G40 |
| SHIGIYA MACHINERY WORKS LTD | G101 |
| SIFI SPA | A03 |
| SONOMED ESCALON | G17 |
| SPEEDWAY SURGICAL CO | G110 |
| SURGICAL SPECIALTIES CORPORATION | G94 |
| SUZHOU KANGJIE MEDICAL INC | Z33 |
| SUZHOU MICROCLEAR MEDICAL INSTRUMENTS CO, LTD | G30 |

EXHIBITORS

| | |
|---|---------|
| SWISSMED PTE LTD | G24-G25 |
| TAKAGI SEIKO CO, LTD | Z14-Z15 |
| THE FRED HOLLOWS IOL, TILGANGA INSTITUTE OF OPHTHALMOLOGY | G88 |
| THIS AG | Z38 |
| TIANJIN SUOWEI ELECTRONIC TECHNOLOGY CO, LTD | Z36-Z37 |
| TOMEY CORPORATION | G64-G65 |
| TOPCON | G45 |
| TRUSETAL VERBANDSTOFFWERK GMBH | G38 |
| UFSK-INTERNATIONAL OSYS GMBH | G12 |
| VESBER BIOTECHNOLOGY CO, LTD | G98 |
| VSY BIOTECHNOLOGY B.V. | Z23-Z24 |
| WELCH ALLYN (HILL-ROM) | G05 |
| WITH US VISION | G97 |
| WUXI VISION PRO LTD | G10 |

EXHIBITOR DIRECTORY

DS02

ALCON PTE LTD

Website:

www.alcon.com

Profile:

Alcon is the global leader in eye care. As a division of Novartis, we offer the broadest portfolio of products to enhance sight and improve people's lives. Our products touch the lives of more than 260 million people each year living with conditions like cataracts, glaucoma, retinal diseases and refractive errors, and there are millions more who are waiting for solutions to meet their eye care needs. Our purpose is reimagining eye care, and we do this through innovative products, partnerships with eye care professionals, and programs that enhance access to quality eye care. Learn more at www.alcon.com.

DS01

SANTEN PHARMACEUTICAL CO, LTD

Website:

www.santen.com

Profile:

Ophthalmology is our singular focus. Santen has conducted business activities as a specialized pharmaceutical company since its foundation in 1890. With Santen's values as our starting point, we build upon a foundation of scientific knowledge and organizational capabilities nurtured for nearly 130 years. We will continue to contribute to ophthalmic treatments, working primarily for the benefit of patients and their loved ones. Santen's values: "Santen's original interpretation of a passage from chapter 22 of Zhongyong (The Doctrine of the Mean) by Confucius meaning "exploring

the secrets and mechanisms of nature in order to contribute to people's health." We think carefully about what is essential, decide clearly what we should do, and act quickly. Our mission statement is "By focusing on ophthalmology, Santen develops unique scientific knowledge and organizational capabilities that contribute to the well-being of patients, their loved ones and consequently to society." Santen will continue to contribute to society by providing valuable products and services: (1) R&D to fulfill unmet medical needs: Santen will promote R&D focused mainly on keratoconjunctival disorders, which lack sufficient treatment globally, as well as glaucoma, retinal and uveal disorders, which can cause blindness. We are also working hard to develop new treatment options in the area of refractive disorders. (2) Initiatives on pharmaceuticals for orphan diseases: In July 2018, we obtained marketing authorization from the European Commission for DE-076C (product name: Verkazia), an orphan medicinal product for treatment of severe vernal keratoconjunctivitis. (3) New treatment options for glaucoma: Santen is working on the development of new treatment options, such as pharmaceutical treatments for glaucoma with a new mechanism of action and devices used in glaucoma implant surgery. (4) Stable supply of ophthalmic solutions: Santen has established a global supply system comprising our four production bases located worldwide: The Noto Plant (Japan), the Shiga Plant (Japan), the Suzhou Plant (China), and the Tampere Plant (Finland), thereby stably supplying high quality ophthalmic solutions. (5) Meticulous attention to quality: Santen maintains safety, efficacy and homogeneity in the manufacturing process in our main area of ophthalmic solutions by insisting on water with high purity equivalent to that used in injections, high purity air equivalent to that used in surgical environments, and

the training and development of people to conduct our rigorous quality management. (6) Production site for improving access to pharmaceuticals: To provide many more patients in China with quality prescription ophthalmic pharmaceuticals at appropriate prices, in August 2016, Santen founded Chongqing Santen Kerui Pharmaceutical Co, Ltd (China). This joint venture with Chongqing Kerui Pharmaceutical (Group) Co, Ltd is currently constructing a manufacturing plant. We aim to contribute to better access to pharmaceuticals for patients who have been unable to obtain or afford such medicines. (7) Raising disease awareness: we will continue to broadly disseminate information aimed at raising disease awareness and encouraging correct recognition and understanding of ophthalmic disorders. Through these efforts, we strive to increase quality of life for as many patients as possible with early identification and treatment. Discover more at www.santen.com.

PS02

ALLERGAN PHARMACEUTICAL INTERNATIONAL LIMITED

Website:

www.Allergan.com

Profile:

Allergan plc (NYSE: AGN), headquartered in Dublin, Ireland, is a bold, global pharmaceutical leader. Allergan is focused on developing, manufacturing and commercializing branded pharmaceutical, device, biologic, surgical and regenerative medicine products for patients around the world. Allergan markets a portfolio of leading brands and best-in-class products for the central nervous system, eye care, medical aesthetics and dermatology, gastroenterology, women's health, urology and anti-infective therapeutic categories. Allergan is an industry leader in Open Science, a model of research and development, which defines our approach to identifying and developing game-changing ideas and innovation for better patient care. With this approach, Allergan has built one of

the broadest development pipelines in the pharmaceutical industry. Allergan's success is powered by our global colleagues' commitment to being Bold for Life. Together, we build bridges, power ideas, act fast and drive results for our customers and patients around the world by always doing what is right. With commercial operations in approximately 100 countries, Allergan is committed to working with physicians, healthcare providers and patients to deliver innovative and meaningful treatments that help people around the world live longer, healthier lives every day. For more information, visit Allergan's website at www.Allergan.com.

PS01

CARL ZEISS PTE LTD

Profile:

Carl Zeiss Meditec AG is one of the world's leading medical technology companies. The company supplies innovative technologies and application-oriented solutions designed to help doctors improve the quality of life of their patients. The company offers complete solutions, including implants and consumables, to diagnose and treat eye diseases. The company creates innovative visualization solutions in the field of microsurgery.

GS03

BAYER THAI CO, LTD

Profile:

Bayer is a life science company with more than 150-year history and core competencies in areas of health care and agriculture. The company's headquarter is located in Leverkusen, Germany. Its products and services are designed to benefit people and improve their quality of life. Bayer is managed with three divisions – Pharmaceuticals, Consumer Health and Crop Science – and Animal Health business unit, which are also our reporting segments. The Pharmaceuticals Division

focuses on prescription products, especially for cardiology and women's healthcare, and specialty therapeutics in areas of oncology, hematology and ophthalmology. The division also comprises radiology business, which markets diagnostic imaging equipment together with necessary contrast agents. Bayer is committed to the principles of sustainable development and its social and ethical responsibilities as a corporate citizen. In fiscal 2017, Bayer had sales of 35.0 billion euros. Capital expenditures amounted to 2.4 billion euros, R&D expenses to 4.5 billion euros. In Thailand, Bayer Thai Co, Ltd was established in 1962. All businesses are represented under its divisions of Pharmaceuticals (including radiology), Consumer Health and Crop Science (including animal health). The company has three locations in Thailand, including a production site in Bangpoo Industrial Estate, Samutprakarn and Research and Development in Suphan Buri.

GS01, M03-M04 JOHNSON & JOHNSON VISION

Website:

www.jjvision.com

Profile:

At Johnson & Johnson Vision, part of Johnson & Johnson Medical Devices Companies, we have a bold ambition: to change the trajectory of eye health around the world. Through our operating companies, we deliver innovation that enables eye care professionals to create better outcomes for patients throughout their lives, with products and technologies that address unmet needs including refractive error, cataracts and dry eye. In communities with greatest need, we work in collaboration to expand access to quality eye care, and we are committed to helping people see better, connect better and live better. Visit us at www.jjvision.com. Follow @JNJVision on Twitter and Johnson & Johnson Vision on LinkedIn.

GS04

NOVARTIS (THAILAND) LTD

Profile:

Novartis provides innovative healthcare solutions that address the evolving needs of patients and societies. Headquartered in Basel, Switzerland, Novartis offers a diversified portfolio to best meet these needs: innovative medicines, eye care, and cost-saving generic pharmaceuticals. Novartis is the only global company with leading positions in these areas. Novartis Group companies employ approximately 118,000 full-time-equivalent associates. Novartis products are available in more than 180 countries around the world.

GS02

TRB CHEMEDICA (THAILAND) LTD

Profile:

TRB CHEMEDICA is a medium-sized Swiss pharmaceutical company, with a focus on research, development and marketing of innovative niche products in specific therapeutic areas, including rheumatology, ophthalmology and neurology. We market a range of ethical pharmaceuticals and medical devices, most of which are patented, in more than 60 countries worldwide. TRB CHEMEDICA is a growing organization currently employing more than 700 people worldwide.

BS01

BJH MEDICAL CO LTD

BS02

NIDEK CO LTD

Website:

www.nidek.com

Profile:

NIDEK provides a wide range of equipment for refraction, diagnosis, and treatment of vision disorders. NIDEK is pleased to introduce our new line of innovative products. We cordially invite you to visit our booth and try out these unique devices. Unveiling of New NIDEK Technology [Glaucoma] Ophthalmic YAG and SLT Laser System, Gonioscope GS-1 [Cataract] Ophthalmic Surgical System with Torsional Mode, Optical Biometer with Barrett formulas [Retina] OCT RS-3000 Advance 2 AngioScan, Microperimeter MP-3 with Visual Rehabilitation, Laser Speckle Flowgraphy LSFG-RetFlow.

Z22

A.R.C. LASER GMBH

Profile:

A.R.C. Laser engineers and supplies modern lasers with focus on Ophthalmology for clinics and practices worldwide. From small portable diode lasers for Cyclo Photocoagulation and DCR - the "FOX" - through glaucoma laser for performing SLT treatments - the "CITO" - to the well-known table-top systems for posterior cataract / iridotomy - the "Q-LAS" - and photocoagulation - the "CLASSIC". Our innovative system to perform laser cataract surgery - the "Nano-Laser" - enables you to perform the most gentle procedure by means of a single-use handpiece in order to ensure maximum benefit for your patients.

G21

ACMED CO, LTD

Website:

www.acmedglobal.com

G54

ADAPTICA SRL

Profile:

Adaptica was founded in 2009 as a spin-off of the University of Padova, Italy specializing in adaptive optics and optoelectronics applied to Industry and astronomical research. Adaptica soon expanded into health-care, with a particular focus on vision and eye-care. We develop and manufacture simple, smart, mobile devices to detect refractive errors and visual defects and solutions to diagnose and correct them. We currently distribute in over 40 countries worldwide. We aim to revolutionize the vision screening process and the corrective prescription, making it widely available more rapidly and maximizing the effectiveness of diagnosis. Our instruments are: 2Win, Kaleidos and VisionFit.

G74-G77

AFTA SERVICE AND SUPPLY CO LTD

Website:

www.aftaservice.com

G55 & G96

ALFA INTES INDUSTRIA TERAPEUTICA SPLENDORE S.R.L.

Profile:

Alfa Intes, a family business with more than six decades of experience in the pharmaceutical industry, is an Italian leading ophthalmological group. The entire group is integrally engaged in the entire pharmaceutical value-chain, from manufacturing, to research and development, until marketing of a wide range of products strictly indicated for the eye-care. Its board portfolio consists of drugs, medical devices, nutraceuticals, surgical equipment and high-tech diagnostic instruments, marketed and

commercialized under different subsidiaries, all engaged to the same goal: becoming the Italian landmark for the entire eye-care community.

G103-G104

AMERICAN ACADEMY OF OPHTHALMOLOGY

Tel:

+1-415-561-8540

Fax:

+1-415-561-5875

Email:

customer_service@aao.org

Website:

www.aao.org

Profile:

The American Academy of Ophthalmology is a global community of eye physicians and surgeons who are dedicated to achieving the highest standard of patient care. As the leader in ophthalmic education, we offer a wealth of innovative resources, such as the ONE Network, EyeWiki, and EyeSmart public education website.

G50-G51

APPASAMY ASSOCIATES

Tel:

+914430101401

Fax:

+914423630721

Email:

info@appasamy.com

Website:

www.appasamy.com

Profile:

Appasamy Associates is a global leader in delivering world's best Ophthalmology products. Our ultimate goal is to provide the highest quality and a wide range of Ophthalmology products that are most accurate and very reliable. These include: Slitlamps (LED Illumination), Digital Imaging Systems, Fundus Camera, Optical Coherence Tomography (OCT), Autorefractor & Keratometer, Auto Lensmeter,

LED HD Visual Acuity Charts, Chart Projectors, Refractor Head, Indirect Ophthalmoscope, Applanation Tonometer, Ultrasound Scanner (A & B SCAN), Operating Microscopes, Phaco Emulsification Systems, Mobile Operating Table, Yag Laser, Green Laser, Intra Ocular Lens (Hydrophilic & Preloaded Hydrophobic), Ophthalmic Visco Elastic Devices, Micro Surgical Instruments & Knives.

M07

ASIA CORNEA SOCIETY

Tel:

+65 6322 9536

Email:

pang.seng.yen@sneec.com.sg

pang.chia.li@sneec.com.sg

Website:

www.asiacorneasociety.org/

Profile:

Asia Cornea Society (ACS) is a supranational, professional society comprising Asian corneal specialists and ophthalmologists dedicated to the exchange of knowledge and information on clinical, educational, and research aspects of the corneal subspecialty focusing on Asian corneal diseases. Of note, the society instituted the Asia Cornea Society-Santen Asia Observership Grant to provide funding to promising young clinicians and scientists for observership training at recognized regional ophthalmic institutions.

M08

ASIA-PACIFIC ACADEMY OF OPHTHALMOLOGY

Tel:

+852 3943 5889

Email:

secretariat@apaophth.org

Website:

www.apaophth.org

Profile:

The Asia-Pacific Academy of Ophthalmology (APAO) is a supranational organization

that welcomes participation from national, territorial, and subspecialty-based ophthalmic societies in the Asia-Pacific region. Being the major driving force of ophthalmic development in the Asia-Pacific region, the APAO seeks to promote the science and art of ophthalmology in the Asia-Pacific region; eliminate preventable blindness through teaching, research, and service; foster cooperation between various ophthalmological societies in different countries; and encourage collaboration with other international and regional ophthalmological organizations. Accordingly, the APAO organizes an annual congress; co-organizes scientific meetings and conferences; publishes *the Asia-Pacific Journal of Ophthalmology*; recognizes ophthalmologists' achievements in research, education, and blindness prevention; runs a leadership development program and an international fellowship program; offers training and learning opportunities to young ophthalmologists; and provides an online platform on which ophthalmologists from different parts of the world can interact and consult with one another.

MO9

ASIA-PACIFIC VITREO-RETINA SOCIETY

Tel:

+852 3943 5889

Email:

secretariat@apvrs.org

Website:

www.apvrs.org

Profile:

The mission of the Asia-Pacific Vitreo-retina Society (APVRS) is to assist the development of the vitreoretinal subspecialty in the Asia-Pacific region, to provide a platform for good integration of skills and knowledge of ophthalmologists in the vitreoretinal subspecialty, and to promote and disseminate eye care information for vitreoretinal diseases and related issues among the general public.

The Chinese Vitreo-retina Society is hosting APVRS 2019 in Shanghai, China, with more than 1,000 participants from 50 countries expected. APVRS 2019 will feature leading speakers from Asia-Pacific countries and high-quality scientific sessions. It will be a great opportunity for all participants to share the latest research findings in the field of vitreo-retina.

G107

BAISHUN MEDICAL INSTRUMENT FACTORY

Profile:

BaiShun is the manufacturer of ophthalmic surgical instruments, including optical crystal lens, ophthalmic microsurgical forceps, ophthalmic scissors, intraocular Micro Devices (20G, 23G, 25G, 27G), cataract, daily instruments, strabismus device, sterilizing trays, covering almost all ophthalmic surgery instruments.

G114-G116

BAUSCH & LOMB (THAILAND) LTD

Profile:

Buach + Lomb is one of the best-known and most respected healthcare brands in the world, offering the widest and finest range of eye health products including contact lenses and lens care products, pharmaceuticals, intraocular lenses, and other eye surgery products. Over the last 165 years, Bausch + Lomb has become a global hallmark for innovation and quality. Our talented and motivated colleagues work relentlessly to invent new materials, engineer new technologies, and ultimately bring new innovations to help people see better to live better.

G07-G08 BEAVER-VISITEC INTERNATIONAL

Tel:

+33670506112

Fax:

+33488714057

Website:

www.beaver-visitec.com

Profile:

BVI is a leading, world-class surgical company across all ophthalmic specialties. With over 80 years of experience, BVI brings together some of the most trusted ophthalmic brands: Beaver microsurgical blades and knives, I-Ring pupil expander, Visitec cannulae, Malosa Medical Single-Use Instruments, Merocel ophthalmic fluid management, Vitreq Vitreoretinal instruments, Wet-Field electrosurgery, Endo Optiks microendoscopy and Parasol punctal occluders. Visit our booth to learn more about our products.

G72 BELLE IN FOCUS SURGICAL CORPORATION

Tel:

+86 512 66900178

Website:

www.belleif.com

Profile:

We focus on designing and manufacturing of micro instruments. Our mission is to become the first one that providing quality micro instruments to doctors, and to provide customized service to those who had innovation demands.

G58-G59 CENTERVUE, SPA

Website:

www.centervue.com

Profile:

Centervue is an Italian company, a leader in

the eye care diagnostic field, that develops systems for the early detection of sight-threatening pathologies, such as diabetic retinopathy, macular degeneration, and glaucoma. Centervue's innovative products are technologically advanced and highly automated. Our goal is to offer user-friendly devices that allow eye practitioners to preserve patients' sight and quality of vision, in particular by detecting preventable diseases.

G92 CHENGDU KANGHONG BIOTECHNOLOGY CO, LTD

Tel:

+86-28-87509966

Fax:

+86-28-87505658

Website:

www.cnkh.com

Profile:

Chengdu Kanghong Biotechnology Co is a leading biopharmaceutical company in China, which specializes in the discovery, development, manufacture, and sale of innovative biologics. Its first product, conbercept ophthalmic injection, was approved to treat neovascular age-related macular degeneration by the China FDA in 2013. This product has been well-received in the Chinese market.

G29 CHONGQING KANGHUA RUIMING S&T CO, LTD

Tel:

+86-2363227336

Website:

www.kanghuaa.com

G79**CILITA LTD****Website:**www.cilita.com**Profile:**

CILITA Ltd is a Russian manufacturer of microsurgical ophthalmic instruments with 15 years of experience in supplying high-quality instruments to numerous Russian and foreign clinics and health care institutions. Only premium-quality raw materials are used for manufacturing of CILITA instruments - stainless steel and titanium alloys. Our product range allows surgeons to perform such ophthalmic surgeries as cataract extraction, treatment of glaucoma and vitreo-retinal disorders, refractive procedures, corneal transplantation, chalazion removal, DCR, pterygium excision, blepharoplasty, etc.

G84**CRISTALENS INDUSTRIE****Website:**www.cristalens.fr**Profile:**

A French intraocular lens manufacturer.

G66**CRYSTALVUE MEDICAL CORPORATION****Website:**<http://www.crystalvue.com.tw/en-global>**Profile:**

Crystalvue Medical specializes in designing/manufacturing medical equipment and accepts OEM/ODM business. Product/Service: OCT, fundus camera, tonometer, biometer, edger, & etc.

Z20**DIOPSYS, INC****Tel:**[+1 973-244-0622](tel:+19732440622)**Fax:**[+1 973-244-0670](tel:+19732440670)**Email:**jvanbochoven@diopsys.com**Website:**www.diopsys.com**Profile:**

As the world leader in modern visual electrophysiology, Diopsys has done more than any other company to advance the use of electroretinography (ERG) and visual evoked potential (VEP) in the eye care practice. The company's unique, patented technology provides eye care professionals with objective, functional information about the health of the vision system to aid in the early detection of vision disorders, and post-treatment tracking for enhanced patient management. Results from these tests are not just for rare diseases, but also to help doctors manage more common disorders like diabetic retinopathy, retinal concerns obscured by media opacities, glaucoma and optic neuritis.

G111-G112**ELLEX****Website:**www.ellex.com**Profile:**

Today, over 35,000 Ellex ophthalmic laser and ultrasound systems are in use in more than 100 countries around the world, achieving ophthalmic outcomes once never thought possible – safely, effectively, accurately and consistently. Initially with SLT selective light therapy, then through the introduction of the iTrack surgical system – our solution for canal-based minimally invasive glaucoma surgery (MIGS) – and more recently with our 2RT Retinal Rejuvenation Therapy, we are expanding our focus on the development of restorative,

rejuvenative treatment options that work holistically with the body's natural healing ability.

G34

ENTOD PHARMACEUTICALS LTD

Profile:

Entod Pharmaceuticals is one of the fastest growing research-based ophthalmic pharmaceutical companies in the world with over 100 ophthalmic finished products and over three decades of experience and pharmaceutical expertise. We develop, design, manufacture and market some of the highest quality and innovative ophthalmic medicines. Our products are sold in over 55 countries including the EU, UK, Africa and Asia. Our R&D teams are constantly developing newer ophthalmic formulations that are required in ophthalmic practice worldwide. Our product range includes intracameral injections, eye drops, eye ointments, eye gels and soft gelatin capsules.

G89

EPSILON USA

Website:

www.epsilonusa.com

Z30, Z31, Z35

ESW-VISION

Tel:

+43 732 27 22 23 10

Email:

marketing@esw-vision.com

Profile:

E-Eye is developed and manufactured in France by E-SWIN. E-Eye is a technological treatment device for Meibomian Gland Dysfunction - the second most common E-Eye disease worldwide. E-Eye is specially certified to treat MGD, using the patented IRPL technology, also developed

by E-SWIN. A short treatment protocol (D0/D15/D45) provides long-lasting results from 6 months to 3 years.

G105

EUROPEAN SOCIETY OF OPHTHALMOLOGY

Website:

<http://soevision.org/>

Profile:

SOE is short for Societas Ophthalmologica Europæa and is the European Society of Ophthalmology with representatives from 44 National Member Ophthalmological Societies in geographical Europe. SOE organises the biennial SOE Congress as well as awarding educational grants, organising the EuLDP (European Leadership Development Programme) programme, sponsoring lectures for clinicians and scientists across Europe and has an extremely active Young Ophthalmologist Section - SOE YOs. The next SOE Congress, SOE2019, will be held in Nice, France, June 13-16, 2019. Visit stand G105 for updates on the Congress and our educational activities.

G108

EXCEL OPTICS SHAH EYE CARE

Website:

www.exceloptics.in

G73

EXCELLENT HI - CARE PVT LTD

Website:

www.excellenthicare.com

G113

EYE TECH CARE

Profile:

EYE TECH CARE develops innovative medical devices for ophthalmology, based on high intensity focused ultrasound technology. The UCP procedure (Ultrasound Cyclo Plasty), performed by the EyeOP1 module, can be used in the care of both open angle and angle closure glaucoma, to reduce intraocular pressure by coagulating targeted sections of the ciliary body with high accuracy. Adaptable to a broad spectrum of patients, from moderate stage patient under maximal medication, to more advanced-stage patient, UCP is a non-invasive, quick and standardized procedure, that has been used to treat more than 7000 patients worldwide.

G33

EYEBRIGHT MEDICAL TECHNOLOGY (BEIJING) CO, LTD

Tel:

+86-010-84148096-815

Website:

www.ebmedical.com/en/

Profile:

Eyebright Medical Group focuses on the protection and caring of human being's eyes and vision health. Since its foundation, Eyebright has been continuously providing excellent medical products to the global ophthalmic surgeons, patients and consumers. As a high-tech enterprise, Eyebright continuously invests in research and development for new technologies. We own innovative product designs and modern production facilities with the most advanced manufacturing and inspection equipment. Now we can provide high quality products for the treatment of ophthalmic diseases and vision problems such as cataract, refractive errors etc. We believe in responsibility, innovation,

perfection and efficiency. Eyebright, your best partner!

M10-M11

EYEWORLD

Website:

www.EyeWorld.org

Profile:

EyeWorld Asia-Pacific is the quarterly international news magazine of the Asia-Pacific Association of Cataract & Refractive Surgeons (APACRS). Published in four editions—English, Chinese, Indian, and Korean—EyeWorld Asia-Pacific keeps readers abreast of the latest developments in ophthalmology while hewing to a perspective that is always relevant to the particular needs and cognizant of the nuances of the Asia-Pacific region. Now in its 15th year, the EyeWorld Asia-Pacific magazine is read by 30,000 ophthalmologists in 22 countries throughout the region. All editions are now available online at www.eyeworld.apacrs.org.

Z21

F.HOFFMANN - LA ROCHE LTD

Website:

roche.com

Profile:

Headquartered in Basel, Switzerland, Roche is a leader in research-focused healthcare with combined strengths in pharmaceuticals and diagnostics. Roche is the world's largest biotech company, with truly differentiated medicines in oncology, immunology, infectious diseases, ophthalmology and neuroscience. Roche is also the world leader in in vitro diagnostics and tissue-based cancer diagnostics, and a frontrunner in diabetes management. Roche's personalised healthcare strategy aims at providing medicines and diagnostics that enable tangible improvements in the health, quality of life and survival of patients. For more information, please visit roche.com.

M01-M02

FCI SAS

Tel:

+33153989896

Fax:

+33153989899

Website:

www.fciworldwide.com

Profile:

FCI is one of the world leaders in ophthalmic surgical devices who can provide you with innovative solutions and high performance products in the fields of oculoplasty, retina, dry eye and instrumentation. As an expert, our objective is to provide you with the best and innovative solutions to help you in the treatment of your patients.

G102

FIBERTECH CO, LTD

Website:

www.fibertech.jp

Profile:

FiberTech, as a member of FUJIKURA group, makes contribution to society by providing gentle remedies to patients and medical staff via our less-invasive and non-invasive endoscopes and other devices.

Z44-Z45

FILTECH ENTERPRISE 1994 PUBLIC COMPANY LIMITED

Profile:

Filtech Enterprise 1994 Public Company Limited was established in 1994. Our main business is medical equipment for ophthalmic, aesthetic, physical therapy and cosmeceutical products, LASIK center and beauty center. We provide total solution for our customer and we are sensitive to the ever-changing needs of our market, customers, suppliers and employees, and assist the necessary support, training, and continuing education in order to be superior in our market.

Z16

FREY SJ

Website:

www.freymedical.eu

Profile:

Frey SJ was formed in 2005 as a family company to evolve ophthalmic and optometric diagnostic devices, especially for early-stage glaucoma and retinal disease, to a higher standard and deliver exclusive technology in a smaller and modern footprint. Frey SJ has manufactured under OEM agreement exclusively for 2 industry leading brands since 2005 and in 2016 launched the Frey brand worldwide. Frey SJ manufacturing design and excellence has created a new competitive dimension across the ophthalmic and optometric industry and discerning customers can now demand enhanced technology built with high quality at a globally competitive price.

Z26

G. SURGIWEAR LIMITED

Website:

www.surgewear.co.in

Profile:

Manufacturer of ophthalmic drapes and implants like glaucoma shunt, silicone and hydroxyapatite eye sphere.

G20

GLAUKOS CORPORATION

Website:

www.glaukos.com

Profile:

Glaukos Corporation is an ophthalmic medical technology and pharmaceutical company focused on the development and commercialization of novel surgical devices and sustained pharmaceutical therapies designed to transform the treatment of glaucoma. The company pioneered micro-invasive glaucoma surgery (MIGS), in order to revolutionize

the traditional glaucoma treatment and management paradigm, and is leveraging its platform technology to build a comprehensive and proprietary portfolio of micro-scale injectable therapies designed to address the complete range of glaucoma disease states and progression. The company's second-generation MIGS device, the iStent inject Trabecular Micro-Bypass System, was approved by the U.S. FDA in June 2018.

G52

GRANDEE INTERNATIONAL CO, LTD

Profile:

We are distributor for the ophthalmic products of Rexxam (Shin-Nippon), CANON, Heine, Volk and Appasamy, which we have been dealing with in this field for 15 years.

G13-G15

HAAG-STREIT AG

Website:

www.haag-streit.com

Email:

neslihan.karaman@haag-streit.com

Profile:

Haag-Streit is considered as the leading provider of instruments and medical-practice equipment for ophthalmologists, optometrists, and opticians. At Haag-Streit Group we develop, manufacture, and deliver high-quality products and first-class service that completely fulfill the needs of our customers worldwide.

G85-G86

HANITA LENSES

Profile:

Hanita Lenses is a worldwide trusted manufacturer and provider of intraocular lens solutions for cataract surgery. With more than 30 years of experience in meeting the varied

needs of ophthalmic surgeons, the Hanita Lenses name is synonymous with high quality, reliability, and service. Hanita Lenses, founded in 1981, offers cataract surgeons a complete solution for proven vision correction. Based on high-quality intraocular lenses, the company's solutions are backed by responsive service and access to Hanita's expert knowledge base.

G41-G43

HEIDELBERG ENGINEERING GMBH

Profile:

Heidelberg Engineering continuously optimizes imaging and healthcare IT technologies to provide ophthalmic diagnostic solutions that empower clinicians to improve patient care. From its inception in 1990, the company has collaborated with scientists, clinicians and industry to develop innovative products that deliver clinically relevant benefits. Uncompromising quality and education play a large part in fostering the diagnostic confidence that has become synonymous with the global brand. The growing product portfolio combines these core technologies: confocal microscopy, scanning lasers and optics, optical coherence tomography (OCT), real-time image processing and analytics, multimodal image management solutions (PACS), electronic medical records (EMR) and data mining.

G82

HENAN UNIVERSE IOL R&M CO, LTD

Profile:

Henan Universe IOL R&M Co, Ltd was established in 1991. It is a professional intraocular lens and ophthalmic auxiliary products manufacturer with the most advanced fully automated computerized equipments. The company always pays high attention to quality control, has obtained the ISO9001, ISO13485 quality control system certificates

and the CE mark for our products, which has built a solid foundation for our quality control. Now the company has products in sale, such as PMMA Intraocular Lens, hydrophilic acrylic intraocular lens, glaucoma drainage implants, hydroxypropyl methylcellulose, sodium hyaluronate, surgical suture needles with thread, disposal injector for foldable iOL and so on.

A04

HUAIAN FRIMEN CO, LTD

Profile:

FRIMEN is one of the leading ophthalmic microsurgical instruments providers in China. Frimen products include: reusable titanium ophthalmic microsurgical instruments, reusable/disposable stainless steel ophthalmic surgical instruments, ophthalmic nano diamond knife/sapphire knife and disposable knives. All Frimen's instruments are CE marked, ISO13485, ISO9001 certified, FDA listed.

G11

IKEGAMI ELECTRONICS ASIA PACIFIC PTE LTD

Z39

INAMI & CO, LTD

Inami & Co, Ltd is a leading company of ophthalmic field for over 90 years in Japan. Since its establishment in 1924, Inami manufactures and sells ophthalmic equipment as slit lamp microscope, operation microscope, universal trial frame and unique surgical instruments. Inami is the first company manufacturing Japanese-made slit lamp and this slit lamp has improved patient's quality of life and prevention of eye disease. With close connections with surgeons, we have developed an extensive range of new surgical instruments.

G106

INTERNATIONAL COUNCIL OF OPHTHALMOLOGY

Tel:

+1-415-521-1651

Fax:

+1-415-521-1649

Email:

info@icoph.org

Website:

www.icoph.org

Profile:

The ICO works with ophthalmologic societies and others to enhance ophthalmic education and improve access to the highest quality eye care in order to preserve and restore vision for the people of the world. Stop by to learn more about our exams, education, fellowships, foundation, and the World Ophthalmology Congress (WOC2020). WOC2020 will be held during June 26-29, 2020 in Cape Town, South Africa at the Cape Town International Convention Centre. Learn more about the ICO and WOC2020 by visiting www.icoph.org.

Z32

JM SURGICALS

Website:

www.jmsurgicals.com

Profile:

JM Surgicals (Jing Ming Science & Technology Co, Ltd Shanghai) is a leading ophthalmic enterprise based in Shanghai, China, manufacturing high-quality sapphire knives, disposable knives, and titanium instruments. The company has served not only China but the whole world's hospitals, distributors, medical facilities, and also charity organizations for over 20 years. It is CE approved and also has FDA, ISO 13485, and ISO 9001. The company has worked with over 80 foreign distributors over the past 10 years and has a very high reputation.

G70-G71

K&K MEDICAL EQUIPMENT (HK) LIMITED

Profile:

Founded in 2000, K&K Medical Equipment (HK) Limited is a professional ophthalmic company specializing in producing the electric lifting tables for ophthalmic equipments, ophthalmic surgery beds, slit-lamps and refraction units, ophthalmic instruments and optical equipments. Our global business distribution networks cover Mainland China, Chinese Taipei, Thailand, Indonesia, Philippines, Vietnam, Bangladesh, India, and Mongolia. With our quality products and services, and frequent participations in numerous optical and ophthalmic exhibitions, we have achieved a reputable recognition among the international optical and ophthalmic fields. We welcome you to our website and hope you enjoy browsing some of our latest products. Feel free to contact us should you have any queries!

G23

KAI INDUSTRIES CO, LTD

Profile:

Kai Industries Co, Ltd based in Japan is a company who is specialized in manufacturing wide range of cutting-edge products including medical instruments. One of the medical instruments of Kai group is the sterile, single-use microsurgery knife for ophthalmology. Kai microsurgery knives are manufactured from state-of-the-art technologies and know-how based on blade production technologies. Kai group was established in 1908, and this year is its 111th anniversary. The product range of Kai microsurgery knives includes: stab knives, MVR knives, slit knives, clear corneal knives, crescent knives, safety knives and others.

G09

KHOSLA SURGICAL INDUSTRIES

Website:

www.khoslasurgicals.com

G78

KOWA COMPANY LTD

Tel:

+81-3-3279-7639

Email:

medical@kowa.co.jp

Website:

www.kowa.co.jp

Profile:

Kowa is actively engaging in various business fields including the manufacturing and sales of medicines and medical equipment. Kowa has produced and sold the first action mechanism for glaucoma and ocular hypertension treatment agent in the world, GLANATEC. Kowa also distributes a wide range of comprehensive medical equipment for eyes using optical technology for optometrists. One key product is Avanse. Avanse is an intraocular lens that is inserted into the eye as a substitute for the crystalline lens during cataract surgery. Avanse has accelerated its sales not only in Japan, but also overseas in many countries.

G31 & G35

LABORATOIRES THEA

Tel:

+34 615 01 61 62

Website:

www.laboratoires-thea.com

Profile:

Théa is a French independent pharmaceutical company specializing in the research, development, and commercialization of eye care products. Théa is now the leader in several therapeutic classes as well as in the field of preservative-free eye drops. It aims to meet the

main needs of all ophthalmologists and offers a complete range of modern products, from well-known classics to innovative treatments, in the areas of diagnosis, surgery, and therapeutics.

G56-G57

LIGHTMED CORPORATION

Profile:

LIGHTMED is a medical device and technology company focused on developing, manufacturing and marketing a full spectrum of innovative laser systems for the ophthalmic market. Our product suite includes advanced solutions for cataract, glaucoma, corneal, and retinal diseases. We have been in business since 1997 with our own R&D and manufacturing facility. All of our products are backed by an industry leading warranty and guaranteed with proactive routine inspections through our sales and service centers located worldwide.

G03-G04

LUCID KOREA CO

Profile:

Lucid Korea has been manufacturing and supplying ortho-K lenses, RGP lenses, intraocular lenses and capsular tension ring to the world for over 20 years. During that time we have built up a justifiable reputation for high-quality products. Lucid Korea always believes and suggests that all contact lens wearers should place the first priority on safety to ocular system when choosing your lenses. For high reputation of technology and reliability, Lucid Korea's products for ophthalmology are distributed in Japan, China, India, and Ukraine. It will be widespread in Asia and Europe in near future.

A01-A02

LUMENIS (HK) LTD

Website:

Lumenis.com

G90

MEDA CO, LTD

Tel:

+86-22-83713828

Fax:

+86-22-83713880

Email:

ivy.chang@meda.com.cn

Website:

www.MEDA.com.cn

Profile:

MEDA, founded in 2004, is a leading manufacturer of ophthalmic devices in China. Our ophthalmic devices include A scan, B scan, UBM, fundus camera, OCT, auto perimeter, phaco emulsifier, YAG laser, green laser etc. Most of the products have got CE mark and approved by FDA. MEDA has been committed to supplying reliable and professional devices and services ever since the very beginning.

G80

MEDI-SUN PTE LTD

Profile:

Medi-Sun Pte Ltd is Tronware Medtech Inc. distribution partner for Southeast Asia. Tronware Medtech Inc. is the leading medical 3D microsurgery system provider, develops and produces high-tech precision 3D microscopy to create safe and comfortable surgical environment. The core competence of Tronware Medtech Inc. is the development and production of advanced and innovative medical devices and optical systems for microsurgery. Tronware Medtech Inc is committed to provide the standard of future 3D surgical image with precision mechanics and innovative technology. Tronware 3D Surgical Microscope - view beyond with 3D.

Z48**MEDIA MICE**

Website:

www.mediamice.com

Profile:

Based in Singapore, Media MICE is ophthalmology's go-to content marketing and publishing company in Asia-Pacific. Since 2009, Media MICE has been helping medical device, pharmaceutical companies, as well as ophthalmologists, with writing, editing and content marketing services, both in the region and globally. We assist in the publication of peer-reviewed journal manuscripts in ophthalmology internationally, articles in our own and other trade magazines, and engaging content using augmented reality and other interactive means. In 2019, Media MICE is launching CAKE Magazine, Asia-Pacific's Most Delicious Magazine on the Anterior Segment.

Z18-Z19 & Z27-Z28
MEDICONTUR KFT

Website:

www.medicontur.com

Profile:

Medicontur Medical Engineering is an independent European company in existence for 30 years, with more than 6 million consistent high-quality intraocular implants produced and distributed in more than 60 countries. At its international offices located near Geneva (Switzerland) Lyon (France), Brno (Czech Republic) and at its facilities located near Budapest (Hungary), Medicontur brings together men and women from a great variety of professions to meet the demanding, continuous policy of safety and innovation. Some of the pioneering innovations include the trifocal Liberty and BiFlex platform, the AddOn range and the SML lens.

G95**MEDIMAGING INTEGRATED SOLUTION INC**

Website:

www.miis.com.tw

G81**MEDIWORKS**

Website:

www.mediworks.biz

G22**MORIA SA**

Website:

moria-surgical.com

G37**MULTIBIZ (S) PTE LTD**

Profile:

Aaren Scientific was established in 1989 with the goal of developing scientifically advanced IOLs. A pioneer in the use of computer-controlled manufacturing of IOLs, OII has remained dedicated to the science of delivering the highest visual acuity with its hydrophilic and PMMA intraocular lenses. Thus, Aaren continues to develop and maintain a record of achievement and reputation for excellence. Aaren Scientific Inc, is certified to EN ISO 13485 and its products CE Marked under the Medical Device Directive, 93/42/EEC. Aaren has 60 employees and its management team has a combined 100 years' experience in the medical device field.

G18-G19

NATUS MEDICAL INCORPORATED

Website:

www.natus.com

Profile:

Natus Newborn Care products address the critical areas of assessment and treatment of newborns, and are designed for use by clinicians as they provide care in the critical minutes and hours after delivery and prior to discharge from the hospital. By allowing for early detection and treatment, we believe our products can improve clinical outcomes, help reduce costs, and minimize the duration of treatment, unnecessary retesting, or hospital readmission. The Natus Newborn Care product portfolio is offering a wide range of devices dedicated to hearing screening, thermoregulation, newborn brain injury and jaundice management, just to name a few of the major applications.

G62

NEITZ INSTRUMENTS CO, LTD

Website:

www.neitz-ophthalmic.com

Profile:

NEITZ Instruments Co, Ltd is a Japanese company providing unique value through development of products in the field of ophthalmology since it was founded in 1965. We are keen to refurbish our technology we have developed, achieving a company who contributes to society with our innovation through not only ophthalmology but also different medical fields. We at NEITZ keep listening to people and their voices of medical professionals in order to address social responsibilities and to meet global needs. Our surgical loupe is often used in various medical scenes around the world. For more information, please visit our website: www.neitz-ophthalmic.com.

G91

NEW VISION MEDITEC CO, LTD

Tel:

+86-153-7005-3550

Fax:

+86-512-6715-7190

Website:

www.4vision.cn

Profile:

New Vision is dedicated to developing and manufacturing high-quality ophthalmic and optometry equipments and offering digital imaging solutions for slit lamp, operation microscope, fundus camera, A/B scan, as well as live/video recording systems for surgery processing in the operating room. Ophthalmic equipments include operation microscope, slit lamp, digital retinal camera, ophthalmic A/B scan, stand and chair, phoropter, autorefractometer/keratometer, auto chart projector, vision chart, auto lensmeter, rebound tonometer, etc. Digital photography adapters include beam splitter, DSLR camera adapter, HD CCD (video camera) adapter, HD camcorder adapter, inverter, iPhone photography adapter, Samsung photography adapter, eyepiece camera adapter, professional software, etc.

Z25

NEXT SIGHT SRL

Website:

www.nextsight.info

G63

OASIS MEDICAL

Tel:

+9093055400

Fax:

+9093055400

Website:

www.oasismedical.com

Profile:

OASIS is a manufacturer of disposable surgical

instruments and dry eye products for the eye care industry. OASIS is a continuously improving company deeply committed to truth in its business approach, relationships, and products based on our foundation of accountability. We welcome feedback from customers and our team to evolve as a proactive company. Our values of integrity and quality guide our commitment to solution-based products that enhance patient care. From the beginning, OASIS has been a practice-based company focused on building the dry eye and surgical practice through the various tools we offer.

G46-G49

OCULUS OPTIKGERÄTE GMBH

Tel:

+852 2987 1050

Fax:

+852 2987 1090

Email:

susann.lorenz-michael@oculus.hk

Website:

www.oculus.de

Profile:

Since 1895, OCULUS manufactures high-quality optical diagnostic and surgical equipment made in Germany. Subsidiary OCULUS Asia Ltd supports Asia directly from Hong Kong. The Pentacam AXL for anterior eye segment tomography combined with optical biometry is an indispensable tool for expert cataract and refractive surgeons. In combination with the Corvis ST it analyses corneal deformation response to describe the individual biomechanical properties of a patient's cornea. The Keratograph 5M improves dry eye diagnosis with non-invasive measurements of tear film and tear lipid layer, visualises meibomian glands and grades eye redness. OCULUS invented the SDI/BIOM for non-contact observation of the retina.

Z01-Z02

OERTLI INSTRUMENTE AG

Tel:

+41 71 747 42 00

Fax:

+41 71 747 42 90

Email:

info@oertli-instruments.com

Website:

www.oertli-instruments.com

Profile:

Oertli makes the difference in eye surgery, with its excellent surgical devices and instruments that make surgical interventions safer, easier and more efficient; with lasting innovations and new technology that have long-term impact on cataract, glaucoma and vitreoretinal surgeries; with superb service and real added value for surgeons and/or personnel; and in its consistent pursuit to accomplish the very best for customers, users and patients. For the first time we present our new Faros, the compact platform designed for phaco, glaucoma and vitreoretinal surgeries including the smallest peripheral instrumentation to the visitors of the APAO.

G67

OPTOMED OY

Tel:

+358407153230

Website:

www.optomed.com

Profile:

Optomed Oy (Ltd) is a Finnish medical technology company and a world-leading manufacturer of hand-held fundus cameras. We develop, commercialize and manufacture modern, mobile and easy-to-use retinal imaging devices and screening software solutions. Our products are being used for screening of blinding eye diseases, such as diabetic retinopathy, AMD and glaucoma. Optomed's hand-held fundus cameras fulfil international ISO 10940 fundus camera standard

requirements and are being used by private clinics, public hospitals, non-government organizations and charities around the world. Optomed's products are registered and marketed in all major markets: Europe, USA, China, Russia, Japan, Korea, India and Brazil.

G60-G61

OPTOPOL TECHNOLOGY

SP.ZO.O.

Z46-Z47

OPTOS

Website:

www.optos.com

Profile:

Optos devices produce ultra-widefield optomap images of approximately 200° of the retina, of which no other device is capable of doing so in a single capture. An optomap image provides more clinical information which facilitates the early detection and effective treatment of diseases evidenced in the retina. Optos is committed to utilizing the latest technology to manufacture new products and software that support optomap as a standard of care, therefore helping eyecare professionals save sight and lives. Furthermore the company continues to strengthen its clinical evidence and expand its disease indications to demonstrate the importance of imaging the entire retina.

G26-G27

OSD MEDICAL GMBH

Profile:

Oculentis is one of the few remaining independent intraocular lenses producers having their own R&D and manufactory. Oculentis' own lens brands LENTIS & FEMTIS help people worldwide to a better vision. The innovative company is driven by highest quality and technology goals. Oculentis strives to find

the optimum eye care solution for surgeons and patients, and is dedicated to providing the highest quality IOLs for treating various eye conditions such as cataract, presbyopia or astigmatism. We offer the finest IOLs for the individual needs and personal preferences for every patient and physician, choosing between standard, convenience/EDOF and premium IOLs.

G93

PESCHKE TRADE

Website:

www.peschketrade.com

Profile:

Our core business is to discover and commercialize innovative products in eye care with proven clinical evidence to create new solutions. Our focus lies on corneal cross-linking, the non-invasive correction of ectatic corneal disorders and the new method for the treatment of infectious keratitis, bullous keratopathy and Fuch's dystrophy. In partnership with our distribution partners we provide physicians around the world the possibility to maintain and improve eye health care for their patients.

Z34

PHOENIX TECHNOLOGY

GROUP

Tel:

1.925.337.6747

Website:

www.phoenixtech.com

Profile:

Phoenix Technology Group powers the fight to prevent blindness by providing physicians, clinicians, and researchers around the world with advanced technology to image and understand the eye. Founded by Bert Massie, Ph.D., inventor of the first digital camera for pediatric retinal imaging, the Phoenix ICON is a revolutionary retinal imaging platform

delivering high-contrast, high-resolution images, with quality you can see. You'll find these breakthroughs inside the ICON platform: completely reinvented illumination, optics, and sensor technology, deployed on a modular platform that was designed from the ground-up for ease of use, reliability, and incredible image quality.

G28 & G32

PHYSIOL S.A.

Profile:

PhysIOL is a European manufacturer of innovative high-performance intraocular lenses, meeting the strictest requirements. Its products, amongst others, are the FineVision trifocal IOLs, toric, hydrophobic IOLs, and preloaded IOL systems. These are supplied to ophthalmic surgeons in over 60 countries, through a worldwide distribution network.

G100

PRESCOTT'S INC

Website:

surgicalmicroscopes.com

G16

PT. ROHTO LABORATORIES INDONESIA

Tel:

+(62) 21 53669091

Fax:

+ (62) 21 53669092

Email:

alam@rohtolab.com

Website:

www.rohtolab.com

Profile:

ROHTO Laboratories Indonesia is a subsidiary company of ROHTO Pharmaceutical Co, Ltd, Japan-based company. Our company provides eye care related products, including eye drops.

Initially started the business intraocular lenses (IOL) for cataract surgery in 1996, we are "the one and only company" producing IOL in Indonesia with high quality products in GMP standard plants, certified by TUV SUD and Quality Management System that meet requirements of ISO and CE mark for the medical devices category. Rohto's IOL has now grown into a brand that is trusted among ophthalmologists and operates in domestic and overseas markets.

M05

PUBLIC HEALTH FOUNDATION OF INDIA (PHFI)

Website:

www.phfi.org; www.ccdr.org.in

Profile:

Certificate Course in Evidence Based Management of Diabetic Retinopathy (CCDR) is four modular program developed by Public Health Foundation of India (PHFI), Centre for Chronic Disease Control (CCDC) and academic partners Dr. Mohan's Diabetes Education Academy (DMDEA) & Aravind Eye Care System and endorsed by UK Research and Innovation Council GCRF through Ornate-India. In three cycles course had 08 National Experts, 37 Regional Faculty and 17 Observers at 18 centers across India and trained 445 primary care physicians/ophthalmologists. The program is delivered through trained diabetologists/endocrinologists and retina specialists in a once a month modular basis contact program.

G68-G69

QUANTEL MEDICAL

Email:

carine.couraudon@quantel-medical.fr

Website:

www.quantel-medical.com

Profile:

Created in 1993, Quantel Medical is a fully owned subsidiary of the Lumibird Group.

Its core activities are the development, manufacturing and commercialization of innovative solutions in medical lasers and ultrasound technologies. Present in over 110 countries either directly or through distributors, Quantel Medical has become a world leader in the ophthalmic field. We address the needs of ophthalmologists to diagnose and treat patients affected by the four major causes of blindness: cataract, glaucoma, diabetic retinopathy and macular degeneration. Since 2018, Quantel Medical has also offered a complete range of diagnosis and treatment of the dry eye syndrome.

G99 **RET, INC**

Website:

www.retinc.kr

Profile:

We are the leading producer of intraocular lens (IOL) injectors and cartridge systems in the world. We manufacture and develop IOL injectors, cartridges, and preloaded systems for IOL manufacturers. We are based in South Korea.

Z17 & Z29 **REXXAM CO, LTD**

Website:

www.shin-nippon.jp

Profile:

We, Rexxam Co, Ltd in Japan is the manufacturer and seller of ophthalmic instruments such as auto ref-K, non-contact tonometer, slit lamp, etc. We introduce new products as specular microscope and auto ref-topographer at this APAO. Please visit our booth No. Z17.

G01 **RIGHT MFG CO, LTD**

Tel:

+813-39602275

Fax:

+813-3960-2285

Website:

righton-oph.com

Profile:

The Righton Series is Right Group's own brand of ophthalmology and optometry instruments. These products feature high quality and performance and, in potential markets for ophthalmic instruments, they are loaded with unique specifications and features unmatched by competitors in order to help improve ophthalmic diagnosis.

G87 **RIFARTEK TECHNOLOGIES CO LTD**

Website:

www.MDSLINX.com

G39 **RUMEX INTERNATIONAL CO**

Website:

www.rumex.com

Profile:

Rumex International Corporation is one of the leading manufacturers of surgical instruments for handheld surgery with many offices and representatives all over the world. We are headquartered in the United States. Our major specialization lies within reusable and disposable instruments and consumables for surgical ophthalmology.

G02**SAV-IOL SA****Profile:**

SAV-IOL designs and manufactures high-quality EDOF IOLs for cataract surgery. The portfolio is made of customizable, premium, and affordable EDOF IOLs, all using a unique EDOF technology called Instant Focus. The goal is to replace the natural accommodation of the crystalline lens enabling a continuous vision from near to distant vision while maintaining a constant resolution and light intensity on the retina.

Z40-Z42**SCHWIND EYE-TECH-SOLUTIONS GMBH****Profile:**

SCHWIND eye-tech-solutions is the technology leader for refractive and therapeutic corneal surgery. The family company develops, produces and markets a comprehensive product portfolio for the treatment of vision defects and corneal diseases. This includes the innovative AMARIS Excimer laser systems, diagnostic systems and treatment planning tools. SCHWIND is also a pioneer in treatment methods with its touch-free SmartSurFACE technology, PresbyMAX for presbyopia treatment, and KPL for corneal transplants. Technological innovation at the highest level, German engineering and quality, intensive application and after-sales support, flexible response to customer needs, and being part of the SCHWIND Family are benefits users appreciate worldwide.

G53**SHANGHAI EXCELLENT VISION MEDICAL EQUIPMENT CO LTD****Profile:**

Our company specializes in ophthalmic

equipment and supplies. We focus on the maintenance of PHACO handpieces, with professional knowledge in medical engineering, ultrasound, electronics, machinery, and computer. We also continuously actively learn advanced technology from overseas, and are striving towards a perfect set of assembly technology and detection methods. Our company has been testing equipment with complete functions and safety performance, to ensure the safety and effectiveness of our products. Meanwhile, we have established a close relationship with manufacturers overseas, to make sure that our customers receive a high-level service.

G83**SHANGHAI NEW EYES MEDICAL INC****Website:**

www.eyesmed.com

Profile:

New Eyes is committed to the digitalization of medical equipment, through the continuous integration of clinical needs and cutting-edge technology. Our main products include digital imaging storage and transmission system, 3D surgical microscope recording system, surgical microscope recording system, ophthalmic wireless PACS management, fundus camera digitalization, image processing system of slit lamps, portable fundus camera, and other medical digital products. New Eyes merged with MTP in 2017. MTP is a local American company, proud to supply its affordable phacoemulsifier worldwide. With a growing network of valued distributors, MTP can promptly satisfy cataract surgeons' phacoemulsifier needs.

Z43**SHANGHAI VISUSCIENCE MEDITECH CO, LTD****Profile:**

Shanghai VisuScience is specialized in

providing Humphrey style perimeters, auto refractometers, lens meter, and other ophthalmic diagnostic devices.

G06

SHENYANG XINGQI PHARMACEUTICAL CO, LTD

Email:

bd_lushanghui@sinqi.com

Website:

www.sinqi.com

Profile:

Shenyang Xingqi Pharmaceutical Co, Ltd has been established for more than 30 years and has developed into a national-level new technology enterprise. The company is specialized in R&D, manufacturing, and marketing of ophthalmic drugs. Meanwhile, Xingqi devotes itself to improving human eye health care with the core value of "managing health, creating future" and the working culture of "devotional, dedicated, and professional". Xingqi has 8 series of products such as antibacterial, anti-inflammatory agents, artificial tears, corneal repair agents, antifatigue drugs, mydriatics, surgery medications, and medications for dry eye disease, including 15 key drugs.

G36 & G40

SHENZHEN MOPTIM IMAGING TECHNIQUE CO, LTD

Profile:

Shenzhen MOPTIM Imaging Technique Co, Ltd is a national high-tech enterprise engaged in the research and development of medical non-destructive equipment, and specialized in the development of OCT equipment.

G101

SHIGIYA MACHINERY WORKS LTD

Profile:

Showcasing the binocular accommodation auto ref/keratometer WAM-5500 that is unique and useful for measuring accommodation objectively. Additionally, it is also beneficial for measuring children as it minimizes the accommodation (no instrument myopia). There will also be the state-of-the-art slit lamp along with our other instruments.

A03

SIFI SPA

Website:

www.sifigroup.com

G17

SONOMED ESCALON

Profile:

Sonomed Escalon is a world leader in the innovative design and manufacture of ophthalmic ultrasound devices for over 35 years. Its range of ultrasound products include A-scan/B-scan/Pachymeter/UBM, and also carries image management software and surgical gases in its product portfolio. Sonomed Escalon markets these products through its vast network of 70 distributors covering over 90 countries. Sonomed Escalon is a highly-recognized brand among ophthalmologists worldwide as it has been known for innovate, reliable and accurate products coupled with providing the highest level of customer service.

G110

SPEEDWAY SURGICAL CO

Profile:

We are one of the leading manufacturers

and exporters of surgical instruments and appliances in India and across the globe. We are committed to provide international quality standards and is ISO 9001:2008, ISO 13485:2003 certified and registered with FDA and CE Mark. We offer special discounted prices only at the exhibition.

G94

SURGICAL SPECIALTIES CORPORATION

Website:

www.surgicalspecialties.com

Profile:

Surgical Specialties Corporation specializes in the design and manufacturing of high-performance surgical knives and wound closure products for over 40 years. We are best known and trusted for LOOK sutures and SHARPOINT ophthalmic microsurgical knives and sutures. Quill knotless tissue-closure device and its groundbreaking contribution to wound closure extends the company's reach to an ever-widening circle of specialties. Today those in the fields of ophthalmology, plastic surgery, orthopedics, urology, dental, and veterinary medicine, among others, look to our products for quality, value, and customer service. We also develop and manufacture OEM components and Private Label finished goods.

Z33

SUZHOU KANGJIE MEDICAL INC

Website:

www.szkjmedical.com

Profile:

Suzhou Kanjie Medical Inc, founded in 1998, is located in Suzhou Industrial Park, China. The main products of Lanling brand are the KJ5 series slit lamp microscope, KJ8 series ophthalmoscope, KJ6 series streak retinoscope, KJ1 series ophthalmic table, etc. Particularly the KJ5S series portable slit lamp microscope

is a creative product for the domestic initiative. At the same time, Kanjie has also developed a digital slit lamp microscope and imaging processing system.

G30

SUZHOU MICROCLEAR MEDICAL INSTRUMENTS CO, LTD

Tel:

+86 15162411189

Fax:

+86-521-67066173

Email:

mjlu@microcleartech.com

Website:

www.microcleartech.com

Profile:

Suzhou MicroClear Medical Instruments Co, Ltd (MicroClear Medical) was established in June 2011. It is an innovative and high technology enterprise, and is a manufacturer that designs, manufactures, sells and services a full line of medical devices, devoted to developing advanced optical imaging instruments and high-resolution biomedical imaging devices. Our products include hand-held fundus camera, digital slit lamp, confocal retina ophthalmoscope (CRO) vision screener.

G24-G25

SWISSMED PTE LTD

Profile:

With a vision to be the leading and most trusted independent supplier of the world's latest and most innovative medical technologies in Asia, SWISSMED is an independent distributor supporting pioneer-minded ophthalmologists who offer superior solutions to their demanding patients. With offices in Singapore, Malaysia, the Philippines, Hong Kong, Thailand, Indonesia, Vietnam, and Australia, we offer innovative solutions in cataract and refractive surgery, dry eye management, and glaucoma management.

We aim to establish long-term partnerships with our customers and contribute positively toward practice development.

Z14-Z15

TAKAGI SEIKO CO, LTD

Tel:

+81-269-22-4512

Fax:

+81-269-26-6321

Website:

www.takagi-j.com/ENG/index/index_EN.html

Profile:

TAKAGI SEIKO was established in 1955 and has kept serving ophthalmology as a manufacturer and marketer of our products. The Takagi-brand has continuously expanded along with the market's needs. We committed ourselves in manufacturing products with "made in Japan" quality and they have been widely recognized and used in more than 50 countries around the world. We make a strong effort in nurturing personnel who can deliver products and service of the highest quality by being aware that every one of us is very much involved and a part of it.

G88

THE FRED HOLLOWS IOL, TILGANGA INSTITUTE OF OPHTHALMOLOGY

Website:

www.tilganga.org

Z38 THIS AG

Profile:

"This" is the name of the innovative company behind "Sophi", the wire- and tube-less phaco machine made in Switzerland. This revolutionary high-end device is designed to bring mobility, simplicity and safety to a new level and to enable new and efficient workflows

in the operating room. Sophi is equipped with an intuitive graphical user interface and a variety of assistant systems which support the surgical team. Sophi also features "Triple-Pump-Fluidics" to provide stable intraocular pressure during surgery. This is Sophi.

Z36-Z37

TIANJIN SUOWEI ELECTRONIC TECHNOLOGY CO, LTD

Website:

www.suowei.com.cn

Profile:

Tianjin Suowei Electronic Technology Co, Ltd is a company that specializes in ophthalmic diagnostic equipment production and sales. It was founded in 2001. Its current registered capital totals RMB 10.65 million. The company covers an area of 4000 square meters and more than 150 employees with professional technology, management, and marketing teams. We have received ISO9001 and ISO13485 international quality system certification and obtained the certificate in 2006. Our products include ophthalmic A/B scan, A scan biometer, pachymeter, full-scale ultrasound biomicroscope (UBM), keratometer, specular microscope, noncontact tonometer, optical biometer, vision screener, etc.

G64-G65

TOMEY CORPORATION

Tel:

+81-52-581-5327

Fax:

+81-52-561-4735

Website:

www.tomey.com

Profile:

Tomey specializes in ophthalmic diagnostic instruments, and has been a worldwide leader in the eye care industry providing user-friendly and accurate devices at an affordable cost for over 40 years. As recent medical technology is

advancing daily, it is vital to develop functional ophthalmic diagnostic instruments to detect and treat diseases in the field of ophthalmology. At Tomey, each staff is working as a specialist in ophthalmic diagnostic instruments and creating the future of ophthalmology under 4 principles: technology, communication, education, and service.

G45 **TOPCON**

Profile:

Topcon has been a leading company in eye care examination, diagnosis, and treatment for nearly 70 years. It has also been a pioneer in the development of digital data management in ophthalmology since the 1990s. Today, as a result of both rapid population growth and aging, we are seeing increased cases of major eye illness, skyrocketing medical costs, and a shortage of physicians. Aiming to resolve these problems, Topcon has applied information communication technology to eye care screening and prognostic management to promote early detection, early treatment, and remote diagnosis, thereby reducing overall medical costs.

G38 **TRUSETAL** **VERBANDSTOFFWERK GMBH**

Websites:

www.eyesfirst.eu / www.tshs.eu

Profile:

Our German company specialises in innovative eye-products, wound-dressings and medical products including diagnostic and surgical instruments. Our product range also comprises TRU-PACK Custom Procedure Trays 'Made in Germany' Individual surgical kits for ophthalmology. For surgical interventions on the eye and subsequent wound care individual surgical kits according to the surgeon's needs. All MASTER-AID products such as ORTOPAD

occlusion eye-patches and wound dressings are famous for their patient-friendly designs, excellent fitting and skin tolerance. TRUSETAL VERBANDSTOFFWERK GMBH stands for superb medical product quality and customer care. Please refer to our websites www.eyesfirst.eu or www.tshs.eu for more information.

G12 **UFSK-INTERNATIONAL OSYS** **GMBH**

Tel:

+499417886244

Fax:

+499417886235

Email:

isabel.haertel@ufsk-osys.com

Website:

www.ufsk-osys.com

Profile:

To be successful in the business of surgery today requires a profit-making mindset. The strategy must ultimately be one of reducing nonoperative time. Our solution is Mobile Table Rotation. UFSK's revolutionary Mobile Table Rotation system will vastly improve your patient throughput and minimize nonoperative time in the OR. This system has been shown to save up to 2 hours per day over traditional surgical solutions.

G98 **VESBER BIOTECHNOLOGY CO,** **LTD**

Profile:

Vesber Biotechnology Co, Ltd was established in 2007. The focus of Vesber is mainly engaged in research and development, manufacturing and sales of high-tech ophthalmic medical products. Foldable Capsular Vitreous Body is the first safe and effective vitreous substitute.

Z23-Z24

VSY BIOTECHNOLOGY B.V.

Website:

vsybiotechnology.com

G05

WELCH ALLYN (HILL-ROM)

Website:

www.welchallyn.com

Profile:

We are a leading manufacturer of medical devices, products and solutions used by caregivers in doctors' offices, hospitals and emergency response settings around the world. Simply stated, we make products that help people improve lives. Since 1915, we have continually applied practical innovations in ways that help healthcare professionals deliver more advanced and comprehensive care, optimise their time and skill, and improve their patients' outcomes. At Welch Allyn, we are pragmatic visionaries focused on helping healthcare providers overcome complex challenges with simple solutions.

G97

WITH US VISION

Profile:

WITH US VISION is a worldwide trusted manufacturer and provider of intraocular lens solutions for cataract surgery. The main model is GV-1 for hydrophobic IOL (posterior chamber IOL). The GV-1 intraocular lens is made of hydrophobic acrylic copolymer with a UV inhibitor. The available powers are between 10.0 and 30.0 D.

G10

WUXI VISION PRO LTD

Tel:

+86-510-8519-2550

Fax:

+86-510-8519-25501

Email:

sales@wx-visionpro.com

Website:

www.wx-visionpro.com

Profile:

Wuxi Vision Pro Ltd specializes in developing and manufacturing high refractive index hydrophobic acrylic intraocular lenses. The company's quality control system has received ISO-13485 certification. Aspheric, spheric and toric IOLs have received CE certification. Our product portfolio is going to include spheric, aspheric, toric and multifocal intraocular lenses which are made from our innovative and proprietary hydrophobic acrylic materials with or without blue-blocking chromophore. We are rapidly growing and looking for distributors from Asia, Europe and South America to grow with us.

SOFT PLUG® Silicone Punctum Plug



Available in:
0.4mm, 0.5mm

PREMIER EDGE® SCALPELS Safety and Standard Disposable



Available in:
2.2mm
2.4mm

Available in:
15°
22.5°

Available in:
2.2mm
3.0mm

Ask About Other Available Sizes.

Call: (909) 305-5400

Email: International@oasismedical.com
Web: www.oasismedical.com

True Dry Eye and Surgical Solutions.

SOFT PLUG®, OASIS®, Premier Edge® and Oasis names & logos are registered trademarks of OASIS® Medical, Inc. 514 S Vermont Ave, Glendora, CA 91741.
LIT-DE-SRG-Ad-APAO2019 Rev.0 12.2018

Optical biometry and inbuilt IOL formulas for any eye status

Use Total Corneal Refractive Power (TCRP) keratometry to account for individual total corneal astigmatism of every patient and select suitable aspheric, toric and multifocal IOL candidates more confidently. Perform swift IOL calculations using the inbuilt IOL Calculator, avoid manual transcription errors and optimize your personal constants.

Visit booth G46-G49 to learn more.



OCULUS Pentacam® AXL The All-in-One Unit!



Join us at the Lunch Symposium
on Thursday, 7 March, 13:00 - 14:00 h
with Prof. Michael Belin

OCULUS Asia Ltd. Hong Kong
www.oculus.de



HOLISTIC APPROACH TO DRY EYE DISEASE

6 **Wed**
Mar
2019

TIME: 1.00 PM - 2.00 PM

VENUE: PLenary HALL 2

CHAIRMAN: ASSOC. PROF. VILAVUN PUANGSRICHARERN, M.D.
CHULALONGKORN MEMORIAL HOSPITAL, THAILAND



DRY EYE PATIENT JOURNEY AND CLINICAL BEST PRACTICE
SPEAKER: DR. DOUGLAS LAM
THE HONG KONG OPHTHALMIC ASSOCIATES, HONG KONG



THE RIGHT TOOLS FOR THE RIGHT TREATMENT
SPEAKER: ASSOC. PROF. VILAVUN PUANGSRICHARERN, M.D.
CHULALONGKORN MEMORIAL HOSPITAL, THAILAND



HOLISTIC TREATMENT FOR DRY EYE DISEASE
SPEAKER: PROF. KYUNG CHUL YOON, M.D.
CHONNAM NATIONAL UNIVERSITY, KOREA

Not all products and/or indications mentioned in this symposium are registered for all countries.

Co-sponsored by APAO 2019 and Santen Pharmaceutical Co., Ltd.

The Art Of Infection Control: Maximizing Microbial Knowledge

8 **Fri**
Mar
2019

Let's Talk About Infection >

Speaker:

> **World leader in academic and clinical ophthalmology.**

Prof. Donald Tan, M.D.
Singapore National Eye Centre, Singapore

Panel Forum: Optimizing Clinical Decision >

Panelists:

> **Corneal infection at an unusual location**

Prof. Lingyi Liang, M.D.
Zhongshan Ophthalmic Center, China

> **Rare Diagnosis of Endophthalmitis:
A Case Worth Sharing**

Prof. Ruben Lim Bon Siong, M.D.
St. Luke's Medical Center College of
Medicine, Philippines

> **Surgical outcome surprise
with mycobacterial infection**

Assoc. Prof. Pinnita Tanthuvanit Prabhasawat, M.D.
Siriraj Hospital, Mahidol University, Thailand



Chairman:
Prof. Shigeru Kinoshita,
Kyoto Prefectural University
of Medicine, Japan



TIME:
1.00 PM – 2.00 PM

Venue:
Plenary Hall 1

Not all products and/or indications mentioned in this symposium are registered for all countries.

Co-sponsored by APAO 2019 and Santen Pharmaceutical Co., Ltd.

MAKING THE DIFFERENCE WITH THE NEW FAROS

How do you make something
great even better?

We show you at the Oertli booth no. Z01-02
in the Plaza hall. Discover the new features
of Faros the compact platform designed
for cataract, glaucoma and vitreoretinal
surgeries.

NEW